

Code: 132-4-2



Golden
World
Trading
Group

www.GoldenWTG.org

豪华型冷藏冷冻柜系列 LUXURY TYPE REFRIGERATION AND FREEZER CABINETS SERIES

- 采用全不锈钢设计制造;
- 外观高档豪华, 款式新颖;
- 可拆卸万向脚轮和可拆卸调节脚互换;
- 万向脚轮带有自锁装置;
- 自动回归门设计, 全不锈钢拉手;
- 精确的微电脑控制柜温和显示柜温。
- Wholly stainless steel design;
- Luxury appearance and novel design;
- Disassembled universal feet wheels and disassembled adjusting feet replaced by each other;
- Self-locking design for universal feet wheels;
- Self-closing door design and stainless steel handle;
- Accurate temperature controlling and displaying by computer;



BQ0.5L1/BQ0.5L1F

BQ1.0L2/BQ1.0L2F

BQ1.6L3/BQ1.6L3F

技术参数 Technical Specifications

型号 Model	名称 Name	功率 Power (W)	电压 Voltager (V)	制冷剂 Refrigerant	温度 Working Temperature (°C)	容积 Available Capacity (M ³)	外形尺寸 Dimension (mm)
BQ0.5L1/BQ0.5L1F	冷藏 / 冷冻柜 Refrigeration/Freezer Cabinet	210/280	220V/240V	R134A/R404A	0~-10/-18~-20	0.5	620x760x2000
BQ1.0L2/BQ1.0L2F	冷藏 / 冷冻柜 Refrigeration/Freezer Cabinet	270/620	220V/240V	R134A/R404A	0~-10/-18~-20	1.0	1210x760x2000
BQ1.6L3/BQ1.6L3F	冷藏 / 冷冻柜 Refrigeration/Freezer Cabinet	310/810	220V/240V	R134A/R404A	0~-10/-18~-20	1.6	1810x760x2000

- 采用全不锈钢设计制造;
- 外观高档豪华, 款式新颖;
- 可拆卸万向脚轮和可拆卸调节脚互换;
- 万向脚轮带有自锁装置;
- 自动回归门设计, 全不锈钢拉手;
- 精确的微电脑控制柜温和显示柜温。

- Wholly stainless steel design;
- Luxury appearance and novel design;
- Disassembled universal feet wheels and disassembled adjusting feet replaced by each other;
- Self-locking design for universal feet wheels;
- Self-closing door design and stainless steel handle;
- Accurate temperature controlling and displaying by computer;



BQ1.6L6W



BQ1.0L4W



BQ0.5L2W



技术参数 Technical Specifications

型号 Model	名称 Name	功率 Power (W)	电压 Voltager (V)	制冷剂 Refrigerant	温度 Working Temperature (°C)	容积 Available Capacity (M ³)	外形尺寸 Dimension (Mm)
BQ0.5L2W	冷藏 / 冷冻柜 Refrigeration/Freezer Cabinet	239/239	220V/240V	R134A/R404A	0 ~ 10/-10 ~ -20	0.5	620x760x1980
BQ1.0L4W	冷藏 / 冷冻柜 Refrigeration/Freezer Cabinet	359/373	220V/240V	R134A/R404A	0 ~ 10/-10 ~ -20	1.0	1210x760x1980
BQ1.6L6W	冷藏 / 冷冻柜 Refrigeration/Freezer Cabinet	562/594	220V/240V	R134A/R404A	0 ~ 10/-10 ~ -20	1.6	1810x760x1980

LUXURY TYPE REFRIGERATION AND FREEZER CABINETS SERIES 豪华型冷藏冷冻柜系列



D0.45L2 G0.45L2
D0.45L2F G0.45L2F



D1.03L4 G1.03L4
D1.03L4F G1.03L4F



D1.62L6 G1.62L6
D1.62L6F G1.62L6F

型号 Model	制冷剂 Refrigerant	有效容积 Validity capacity(L)	输入功率 Input power (w)	温度范围 Freezing Temperature	净重 Net Weight (Kg)	制冷方式 Refrigeration	装箱数 40HQ(台)	外形尺寸 Exterior Dimension (LXDXH)(mm)	包装尺寸 Packing Dimension (mm)
D0.45L2/G0.45L2	R134a	480	237/213	-15~-22/0~10	97	直冷 Static cooling	47	610X760X1945	692X890X2030
D0.45L2F/G0.45L2F	R134a	430	293/233	-15~-22/0~10	97	风冷 Ventilated cooling	47	610X760X1945	692X890X2030
D1.03L4/G1.03L4	R404a/R134a	1080	573/383	-15~-22/0~10	151	直冷 Static cooling	22	1225X760X1970	1307X890X2040
D1.03L4F/G1.03L4F	R404a/R134a	1000	613/423	-15~-22/0~10	151	风冷 Ventilated cooling	22	1225X760X1970	1307X890X2040
D1.62L6/G1.62L6	R404a/R134a	1680	796/486	-15~-22/0~10	227	直冷 Static cooling	13	1840X760X1970	1922X890X2040
D1.62L6F/G1.62L6F	R404a/R134a	1530	856/540	-15~-22/0~10	227	风冷 Ventilated cooling	13	1840X760X1970	1922X890X2040



D0.6L1 G0.6L1
D0.6L1F G0.6L1F



D1.03L2 G1.03L2
D1.03L2F G1.03L2F



D1.62L3 G1.62L3
D1.62L3F G1.62L3F

型号 Model	制冷剂 Refrigerant	有效容积 Validity capacity(L)	输入功率 Input power (w)	温度范围 Freezing Temperature	净重 Net Weight (Kg)	制冷方式 Refrigeration	装箱数 40HQ(台)	外形尺寸 Exterior Dimension (LXDXH)(mm)	包装尺寸 Packing Dimension (mm)
D0.6L1/G0.6L1	R134a	620	363/263	-15~-22/0~10	118	直冷 Static cooling	28	760X760X1945	842X890X2030
D0.6L1F/G0.6L1F	R134a	580	383/283	-15~-22/0~10	118	风冷 Ventilated cooling	28	760X760X1945	842X890X2030
D1.03L2/G1.03L2	R404a/R134a	1080	573/363	-15~-22/0~10	151	直冷 Static cooling	22	1225X760X1970	1307X890X2040
D1.03L2F/G1.03L2F	R404a/R134a	1000	613/423	-15~-22/0~10	151	风冷 Ventilated cooling	22	1225X760X1970	1307X890X2040
D1.62L3/G1.62L3	R404a/R134a	1680	796/486	-15~-22/0~10	227	直冷 Static cooling	13	1840X760X1970	1922X890X2040
D1.62L3F/G1.62L3F	R404a/R134a	1530	856/540	-15~-22/0~10	227	风冷 Ventilated cooling	13	1840X760X1970	1922X890X2040

展示柜系列 SHOWCASES SERIES

豪华型翅片无霜风冷立式冷藏趟门展示柜系列 (单温) Luxurious Wing Air-cool Vertical Refrigerator Show Case Series



主要特点

- 接水槽设计, 防止因箱内外温差引起的玻璃门凝露水珠滴落地面, 保持地面清洁。
- 引用国内领先技术, 特设省电装置, 开门时风机自动停止运转, 关门后风机继续运行, 有效节约能源。
- 接水盘内为发热管, 有水流放入水盘时, 发热管自动加热将水蒸发, 安全省心。

Features

- The design of water trough collection, it's prevent the dewdrop occur from refrigerator's glass doordrop on the floor, keep the floor clean.
- Uses an energy saving design, when the door is opened the fan automatically stops, when the door is closed the fan starts operating.
- The water tray is designed with a heater, once water is collected in the tray, the heater will automatically heat and evaporate the water, safe and convenient.

型号 Model	容积 Capacity (L)	工作温度 Temperature (°C)	重量 Weight (kg)	压缩机功率 Power (W)	耗电量 Power Consumption (kwh/24h)	制冷剂 Refrigerant	40尺柜可装数量(台) 40' container (pcs)	外形尺寸 Dimension (mm)	包装尺寸 Packing Dimension (mm)
LG4-518LFC-2	518	0~10	130	273	2.2	R134a	41	880x650x2045	965x700x2080
LG4-688LFC-2	688	0~10	168	395	2.8	R22	27	1165x650x2045	1220x700x2080
LG4-828LFC-2	828	0~10	194	450	3	R22	24	1385x650x2045	1435x700x2080

主要特点 FEATURES

1. 风冷强制冷气循环, 快速制冷, 温度均匀。
2. 铝合金装饰门框, 中空防雾玻璃, 外观高档豪华。
3. 箱顶设豪华广告灯箱, 内置立式照明灯管, 夜晚展示效果出众。
4. 设有上锁装置, 用户可自由选配门锁, 安全可靠。
5. 冷凝热风定向排放, 消除玻璃门凝露现象。

The exhaust fan makes good air conditioning circulation, and rapid refrigeration and balanced temperature.

The door frame decorated with aluminum alloy, with hollow antifogging glass door, features in looks top-grade and luxurious.

The ceiling has luxury advertising light boxes, built-in with vertical lighting pipe, fine display effect especial at night.

It has lock equipment, and users can choose the lock at will. It is safe and reliable.

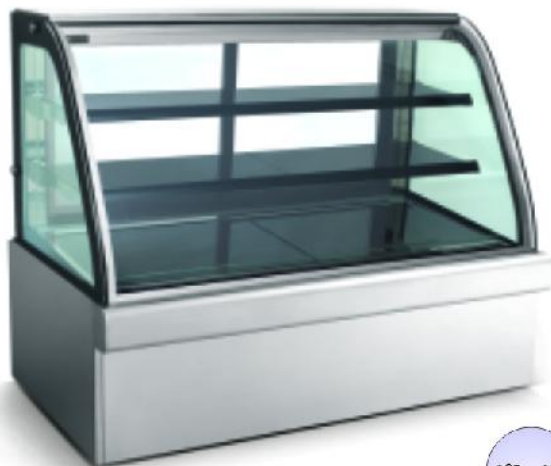
The heat air directional emission can prevent the glass door from congealation.



LC-800TM2F
LC-1200TM2F

型号 Model	外形尺寸 Exterior Dimensions (LXDXH)(mm)	包装尺寸 Packing Size(mm)	有效容积 Availble capacity(m3)	输入功率 Input power (w)	温度范围 Freezing Temperature	耗电量 Power consumption	净重 Net Weight (Kg)	毛重 Cross weight (kg)	装箱数 40GP
LC-800TM2F	1012x703x2050	1090x775x2105	738	369	0~10	3.5	153	173	33
LC-1200TM2F	1362x703x2050	1430x775x2105	1026	433	0~10	4.0	195	225	24

蛋糕展示柜系列 CAKE SHOW CASE SERIES



2°C~8°C

落地式单温蛋糕展示柜
Floor Single Temperature Cake Show Cabinet

型号 Model	尺寸 Size(mm)	容积 Volume	层数 Rise	功率 Power	净重 Weight
S830A	900x840x1200	260L	3	633W	200KGS
S840A	1200x840x1200	360L	3	780W	280KGS
S850A	1500x840x1200	460L	3	937W	320KGS
S860A	1800x840x1200	560L	3	999W	360KGS
S880A	2400x840x1200	760L	3	1354W	465KGS



2°C~8°C

落地式单温蛋糕展示柜
Floor Single Temperature Cake Show Cabinet

型号 Model	尺寸 Size(mm)	容积 Volume	层数 Rise	功率 Power	净重 Weight
L830A	900x790x1200	270L	3	581W	215KGS
L940A	1200x790x1200	375L	3	718W	255KGS
L950A	1500x790x1200	475L	3	865W	295KGS
L860A	1800x790x1200	575L	3	960W	335KGS
L880A	2400x790x1200	780L	3	1282W	415KGS



2°C~8°C

落地式单温蛋糕展示柜
Floor Single Temperature Cake Show Cabinet

型号 Model	尺寸 Size(mm)	容积 Volume	层数 Rise	功率 Power	净重 Weight
S930A	900x810x1370	340L	4	733W	240KGS
S940A	1200x810x1370	470L	4	874W	285KGS
S950A	1500x810x1370	600L	4	988W	325KGS
S960A	1800x810x1370	730L	4	1145W	370KGS
S980A	2400x810x1370	990L	4	1384W	460KGS



2°C~8°C

落地式单温蛋糕展示柜
Floor Single Temperature Cake Show Cabinet

型号 Model	尺寸 Size(mm)	容积 Volume	层数 Rise	功率 Power	净重 Weight
GL830A	900x750x1350	349L	4	644W	260KGS
GL840A	1200x750x1350	400L	4	847W	295KGS
GL850A	1500x750x1350	600L	4	974W	345KGS
GL860A	1800x750x1350	650L	4	1151W	390KGS

BAR BEER CABINET 啤酒柜系列



Features
 .self closing doors
 .Integral locks fitted as standard
 .Interior illumination
 .fully adjustable industrial shelves every 11mm
 .strengthened door frame
 .auto defrost with self evaporating drip tray
 .pressure injected foam insulation
 .electronic temperature controller
 .double-glazed glass door(s)

特征：
 自动关门；
 配备标准锁；
 内部灯光照明；
 完全可调整的专业架子，每片尺度为11毫米
 自动清理内部水汽，保持干燥
 按钮绝缘
 电子式温控器
 双面可视玻璃门

单门黑色酒吧饮料柜

H-C1-900

容量升/立方尺:130/4.6
 温度范围 Performance:0°-10°C/32°-50°F
 控温类型 Features:电
 层架层数 Features:2
 尺寸 net:600x520x900mm
 认证 CE/ROHS/MEPS/ECA

高度选择:

900mm (标准) ;
 865mm 内部高度跟900mm标准的内部高度一样
 840mm 内部增加: 50%的容量
 可视的光滑玻璃门

height options:

900mm(standard)
 865mm height with same interior height as
 900mm model
 840mm with 50% increase in container
 heated triple-glazed doors.

双门黑色酒吧饮料柜

H-C2-900

容量升/立方尺:200/7.06
 温度范围 Performance:0°-10°C/32°-50°F
 控温类型 Features:电
 层架层数 Features:4
 尺寸 net:900x520x900mm
 认证 CE/ROHS/MEPS/ECA



三门黑色酒吧饮料柜

H-C3-900

容量升/立方尺:310/10.9
 温度范围 Performance:0°-10°C/32°-50°F
 控温类型 Features:电
 层架层数 Features:6
 尺寸 Net:1350x520x900mm
 认证 CE/ROHS/MEPS/ECA

✦ 可供选择的颜色有 黑色、银白色或客户自定义，也可以是不锈钢的。多种高度可供选择。

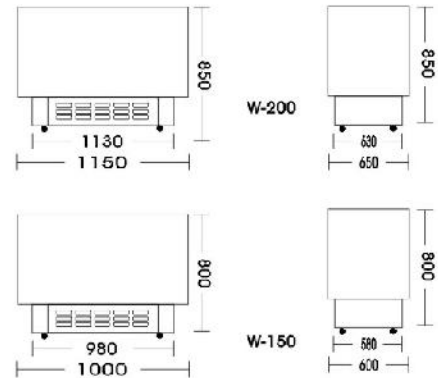
.AVAILABLE IN BLACK,SILVER,CUSTOM COLOUR OR STAINLESS STEEL

.SLIDING DOORS AVAILABLE AS OPTION

.VARIOUS HEIGHT OPTIONS(see panel)

香港联品冷柜系列 HONG KONG LIANPIN REFRIGERATION CABINET SERIES

不锈钢冷水柜 Stainless steel water cooler



- 1. 内设运水马达, 保持柜内水温均匀、稳定
- 2. 304#不锈钢装饰边, 尽显高档、豪华。

型号 Model	容积 Capacity(L)	工作温度 Temperature	外型尺寸 Dimension(mm)	重量 Net Weight(kg)	功率 Power(W)	耗电量 Power Consumption (kw.h/24h)	电源 Power Supply
W-150	150	5°C ≤ t ≤ 20°C	1000x600x800	60	400	2.3	187-240V/50Hz
W-200	200	5°C ≤ t ≤ 20°C	1150x650x850	68	450	2.5	187-240V/50Hz

转换型卧式玻璃门冷藏/冷冻陈列柜系列 (单温) Horizontal Glass Door Refrigeration/freezing Cabinet Series (single Temperature)

性能与特点 Main function characteristics

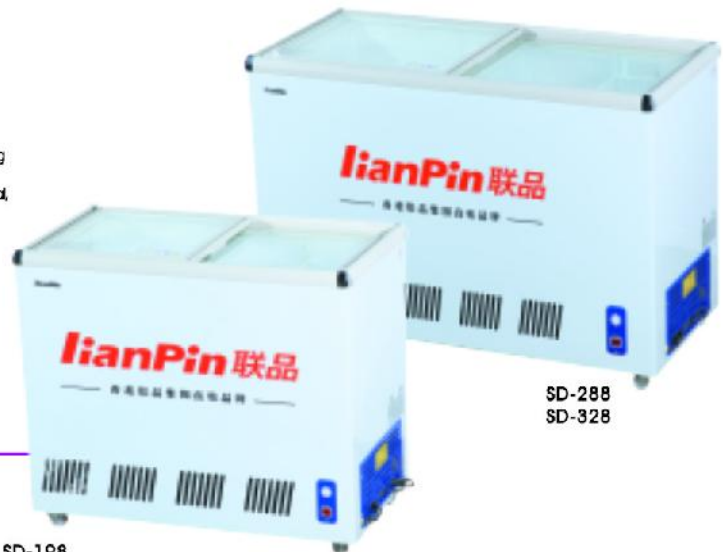
- 平移中空玻璃门 Sliding hollow moving glass door.
- 内胆采用压花铝板, 美观耐用 Embossed inner container for refrigerating and freezing with switchable temperature controller.
- 冷藏, 冷冻功能可转换 The product is made of environmental friendly material, Convertible refrigerator/freezer.



压花铝板内胆



随机配优质货篮



SD-288
SD-328

SD-198
SD-218

- 静音运行 low noise operating
- 三宽设计 with climatic used
- 快速制冷 powerful refrigeration
- 无氟环保 CFC free environmental friendly
- 高效节能 high efficiency and energy saving

型号 Model	容积 Capacity(L)	工作温度 Temperature	外型尺寸 Dimension(mm)	包装尺寸 Packing dimension(mm)	重量 Weight(kg)	功率 Power(W)	耗电量 Power consumption (kw.h/24h)	制冷剂 Refrigerant
SD-198	198	0~10/-18°C	992x552x890	1045x605x950	58	118	1.1	R134a/R600a
SD-218	218	0~10/-18°C	1092x652x890	1145x605x950	60	136	1.2	R134a/R600a
SD-288	288	0~10/-18°C	1262x627x890	1285x665x950	70	162	1.3	R134a/R600a
SD-328	328	0~10/-18°C	1382x627x890	1485x665x950	75	203	1.8	R134a/R600a

HONG KONG LIANPIN REFRIGERATION CABINET SERIES 香港联品冷柜系列

卧式玻璃门冷藏/冷冻陈列柜系列(双温)

Horizontal glass door refrigeration/freezing cabinet series(double temperature)

性能与特点 Main function characteristics

- 平移中空玻璃门
- 双室双温可储藏不同温度需求的食品;
- 产品采用环保材料制造
- 冷藏室采用不锈钢内胆, 可装水快速冷却食品,
- 并设有排水装置, 方便使用。

Sliding hollow moving glass door

Dual rooms of different temperatures for foods of different requirements

The product is made of environmental friendly material

Stainless steel inner container in the refrigerating room may

fast-freeze the foods by water with drainer unit for convenient operation



静音运行
low noise
operating



三宽设计
with
climatic used



快速制冷
powerful
refrigeration



无氟环保
CFC free
environment friendly



高效节能
high efficiency
energy saving



SCD-188
SCD-208
SCD-268

SCD-308
SCD-308-II

型号 Model	容积 Capacity(L)	工作温度 Temperature	外型尺寸 Dimension(mm)	包装尺寸 Packing dimension(mm)	重量 Weight(kg)	功率 Power(W)	耗电量 Power consumption (kw.h/24h)	制冷剂 Refrigerant
SCD-188	188	0~10/-18℃	992x552x890	1045x600x920	60	115	1.10	R134a/R600a
SCD-208	208	0~10/-18℃	1092x552x890	1145x600x920	62	136	1.15	R134a/R600a
SCD-268	268	0~10/-18℃	1262x627x890	1315x680x920	72	157	1.40	R134a/R600a
SCD-308	308	0~10/-18℃	1382x627x890	1435x680x920	75	203	1.80	R134a/R600a
SCD-308-II	308	0~10/-18℃	1382x627x890	1435x680x920	78	233	2.00	R134a/R600a

卧式玻璃门冷藏陈列柜系列(单温水柜)

Horizontal Glass Door Refrigeration Cabinet Series (single Temperature Water Cabinet)

性能与特点 Main function characteristics

- 平移中空玻璃门
- 蒸发器采用100%纯铜管制造
- 内胆采用不锈钢, 可装水快速冷却食品

Sliding hollow moving glass door;

The evaporator is made of pure copper;

Stainless steel inner container in the refrigerating room may fast-freeze the foods by water with drainer unit for convenient operation.



内胆采用不锈钢制造, 经久耐用
The inner vessel is made of stainless steel, very durable.



SD-288
SD-328

SD-198
SD-218



静音运行
low noise
operating



三宽设计
with
climatic used



快速制冷
powerful
refrigeration



无氟环保
CFC free
environment friendly



高效节能
high efficiency
energy saving

型号 Model	容积 Capacity(L)	工作温度 Temperature	外型尺寸 Dimension(mm)	包装尺寸 Packing dimension(mm)	重量 Weight(kg)	功率 Power(W)	耗电量 Power consumption (kw.h/24h)	制冷剂 Refrigerant
SD-198	198	0~10℃	992x552x890	1045x605x950	63	115	1.0	R134a/R600a
SD-218	218	0~10℃	1092x552x890	1145x605x950	68	118	1.0	R134a/R600a
SD-288	288	0~10℃	1262x627x890	1285x665x950	70	157	1.2	R134a/R600a
SD-328	328	0~10℃	1382x627x890	1485x665x950	73	162	1.3	R134a/R600a

香港联品冷柜系列 HONG KONG LIANPIN REFRIGERATION CABINET SERIES

卧式蝴蝶门冷藏冷冻柜系列(双温) (Dual temperature)
Horizontal with butterfly door Refrigerate Frozen series

转换型卧式蝴蝶门冷藏冷冻柜系列(单温) (Single temperature)
Convertible Horizontal with butterfly door Refrigerate Frozen series

性能与特点 Main function characteristics

- 采用双折叠式蝴蝶门带锁;
- 配有单层玻璃门双重保温, 效果好;
- 双室双温可储藏不同温度需要的食品;
- 冷冻冷藏功能可转换。

Heat radiation glass pulling door can prevent the sun shine from causing temperature.
The double-temperature and double-box design from causing temperature.
Dual rooms of different temperatures for foods of different requirements.
Convertible refrigerator/freezer.



BCD-168 BCD-218
BCD-198 BCD-268



BD-168 BD-218
BD-198 BD-268

- 静音运行 low noise operating
- 三宽设计 with climatic used
- 快速制冷 powerful refrigeration
- 无氟环保 CFC free
- 高效节能 high efficiency and energy saving

型号 Model	容积 Capacity(L)	工作温度 Temperature	外型尺寸 Dimension(mm)	包装尺寸 Packing dimension(mm)	重量 Weight(kg)	功率 Power(W)	耗电量 Power consumption (kw.h/24h)	制冷剂 Refrigerant
BCD-168	168	0~10/-18℃	985x500x915	1035x555x970	54	136	1.15	R134a/R600a
BCD-198	198	0~10/-18℃	1020x545x915	1075x600x970	56	136	1.15	R134a/R600a
BCD-218	218	0~10/-18℃	1080x545x915	1135x600x970	65	136	1.15	R134a/R600a
BCD-268	268	0~10/-18℃	1225x545x915	1280x600x970	75	157	1.40	R134a/R600a
BD-168	168	0~10/-18℃	985x500x915	1035x555x970	54	136	1.15	R134a/R600a
BD-198	198	0~10/-18℃	1020x545x915	1075x600x970	56	136	1.15	R134a/R600a
BD-218	218	0~10/-18℃	1080x545x915	1135x600x970	65	136	1.15	R134a/R600a
BD-268	268	0~10/-18℃	1225x545x915	1280x600x970	75	157	1.40	R134a/R600a

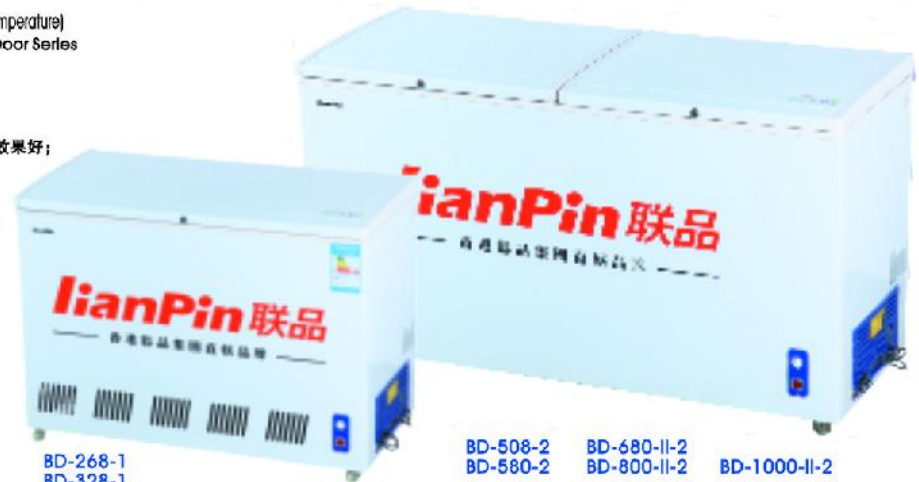
转换型卧式顶盖门冷藏冷冻柜系列(单温) (Single temperature)
Convertible Horizontal Refrigerator/freezer With Canopy Door Series

性能与特点 Main function characteristics

- 采用顶盖式翻盖门带锁;
- 冷冻冷藏可转换;
- 900升以上的大容量柜采用五面制冷, 或采用双机头, 制冷效果好;
- 设有排水装置, 方便使用。

On-top overlapping door with lock.
Convertible refrigerator/freezer.

The product is made of environmental friendly material,super large-sized are of two machine heads and excellent refrigeration.
With drain unit for convenient operation.



BD-268-1
BD-328-1

BD-508-2 BD-680-II-2
BD-580-2 BD-800-II-2
BD-1000-II-2

- 静音运行 low noise operating
- 三宽设计 with climatic used
- 快速制冷 powerful refrigeration
- 无氟环保 CFC free
- 高效节能 high efficiency and energy saving

型号 Model	容积 Capacity(L)	工作温度 Temperature	外型尺寸 Dimension(mm)	包装尺寸 Packing dimension(mm)	重量 Weight(kg)	功率 Power(W)	耗电量 Power consumption (kw.h/24h)	制冷剂 Refrigerant
BD-268-1	268	0~10/-18℃	1130x680x920	1180x700x980	65	157	1.4	R134a/R600a
BD-328-1	328	0~10/-18℃	1240x680x920	1290x700x980	68	162	1.3	R134a/R600a
BD-508-2	508	0~10/-18℃	1595x680x920	1655x710x1010	90	259	2.0	R134a/R600a
BD-580-2	580	0~10/-18℃	1715x740x920	1775x765x1010	115	306	2.7	R134a/R600a
BD-680-II-2	680	0~10/-18℃	2100x740x920	2160x765x1010	125	390	3.5	R134a/R600a
BD-800-II-2	800	0~10/-18℃	2200x740x920	2260x765x1010	135	390	3.5	R134a/R600a
BD-1000-II-2	1000	0~10/-18℃	2430x790x920	2490x815x1010	150	518	4.4	R134a/R600a
BD-1300-II-3	1300	0~10/-18℃	2680x900x920	2740x915x1010	210	612	5.0	R134a/R600a
BD-1650-II-3	1650	0~10/-18℃	3100x900x920	3160x915x1010	235	706	5.8	R134a/R600a

TOP-OPEN DOOR CHEST FREEZER SERIES 顶盖门冷冻柜系列



BC/BD-520 BC/BD-820
BC/BD-620 BC/BD-1020



低温顶盖门系列

Low Temperature top-open doors Series

型号 Model	有效容积 Validity Capacity(L)	温度范围 Load Temperature	功率 Power(W)	耗电量 Power consumption (Kw.h/24h)	净重 Net (kg)	毛重 Gross (kg)	40' 柜可装数量 (台) 40' container (PCS)	外型尺寸 Dimension(mm)	包装尺寸 Packing dimension(mm)
BC/BD-520	520	-18~-25℃	246	2.65	83	93	38	1620x745x898	1685x775x940
BC/BD-620	620	-18~-25℃	350	3.25	95	107	34	1880x745x898	1945x775x940
BC/BD-820	820	-18~-25℃	400	3.2	138	168	28	2220x815x990	2285x845x1010
BC/BD-1020	1020	-18~-25℃	460	3.8	160	185	16	2680x815x990	2745x845x1010



BC/BD-230(D)



BC/BD-270(D) BC/BD-420
BC/BD-320



WD-338Y

型号 Model	有效容积 Validity Capacity(L)	温度范围 Load Temperature	功率 Power(W)	耗电量 Power consumption (Kw.h/24h)	净重 Net (kg)	毛重 Gross (kg)	40' 柜可装数量 (台) 40' container (PCS)	外型尺寸 Dimension(mm)	包装尺寸 Packing dimension(mm)
WD-338Y	338	-18~-25℃	256	2.5	75	85	50	1296x600x910	1370x690x990
BC/BD-230(D)	230	-18~-25℃	127	0.87	55	62	56	1140x655x898	1210x680x940
BC/BD-270(D)	270	-18~-25℃	156	0.96	59	68	52	1280x655x898	1350x680x940
BC/BD-320	320	-18~-25℃	176	1.06	65	72	56	1080x745x898	1145x775x940
BC/BD-420	420	-18~-25℃	203	1.41	75	83	44	1350x745x898	1415x775x940

冷藏、冷冻柜系列 REFRIGERATE & FREEZER SERIES



WC/WD-230
WC/WD-270
WC/WD-330



WCD-218
WCD-258
WCD-318S(双机)

低温、双温、双室平移玻璃门系列
Low temperature & Double temperature & Double room Plane movement glass doors Series

型号 Model	有效容积 Validity Capacity(L)	温度范围 Load Temperature	功率 Power(W)	耗电量 Power consumption (Kw.h/24h)	净重 Net (kg)	毛重 Gross (kg)	40" 柜可装数量 (台) 40" container (PCS)	外型尺寸 Dimension(mm)	包装尺寸 Packing dimension(mm)
WC/WD-230	230	-18~-22℃	156	1.65	65	72	56	1140x569x910	1210x640x960
WC/WD-270	270	-18~-22℃	183	1.75	69	78	52	1280x569x910	1350x640x960
WC/WD-330	330	-18~-22℃	226	1.85	80	93	50	1310x659x930	1380x730x980
WCD-218	218	0-10/-15~-22℃	156	1.55	66	73	56	1140x569x910	1210x640x960
WCD-258	258	0-10/-15~-22℃	183	1.65	70	79	52	1280x569x910	1350x640x960
WCD-318S	318	0-10/-15~-22℃	206	1.7	82	95	50	1310x659x930	1380x730x980



BC/BD-230
BC/BD-270



BCD-218
BCD-258

低温、双温、双室折叠门系列
Low temperature & Double temperature & Double room Folding doors Series

型号 Model	有效容积 Validity Capacity(L)	温度范围 Load Temperature	功率 Power(W)	耗电量 Power consumption (Kw.h/24h)	净重 Net (kg)	毛重 Gross (kg)	40" 柜可装数量 (台) 40" container (PCS)	外型尺寸 Dimension(mm)	包装尺寸 Packing dimension(mm)
BC/BD-230	230	-18~-22℃	127	0.87	55	62	56	1140x565x920	1210x640x970
BC/BD-270	270	-18~-22℃	156	0.96	59	68	52	1280x565x920	1350x640x970
BCD-218	218	0-10℃/-18~-22℃	127	0.65	56	63	56	1140x565x920	1210x640x970
BCD-258	258	0-10℃/-18~-22℃	127	0.71	61	70	52	1280x565x920	1350x640x970

REFRIGERATE & FREEZER SERIES 冷藏、冷冻柜系列



WC230(A)
WC330(A)



平移玻璃门水柜系列
Plane movement glass doors Water Cabinet Series

型号 Model	有效容积 Validity Capacity(L)	温度范围 Load Temperature	功率 Power(W)	耗电量 Power consumption (Kw.h/24h)	净重 Net (kg)	毛重 Gross (kg)	40" 柜可装数量 (台) 40" container (PCS)	外型尺寸 Dimension(mm)	包装尺寸 Packing dimension(mm)
WC230(A)	230	0~-10℃	156	1.65	65	72	56	1140x569x910	1210x640x960
WC330(A)	330	0~-10℃	183	1.75	80	93	50	1310x659x930	1380x730x980



WC/WD-180(A)
WC/WD-230(A)
WC/WD-270(A)
WC/WD-330(A)

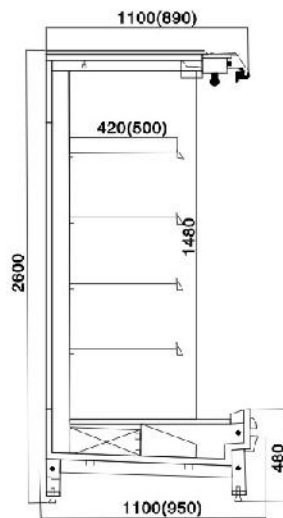


WCD-190(A)
WCD-218(A)
WCD-258(A)
WCD-318S(A)(双机)

低温、双温、双室平移玻璃门系列
Low temperature & Double temperature & Double room Plane movement glass doors Series

型号 Model	有效容积 Validity Capacity(L)	温度范围 Load Temperature	功率 Power(W)	耗电量 Power consumption (Kw.h/24h)	净重 Net (kg)	毛重 Gross (kg)	40" 柜可装数量 (台) 40" container (PCS)	外型尺寸 Dimension(mm)	包装尺寸 Packing dimension(mm)
WC/WD-180(A)	180	-15~-18℃	145	1.4	54	66	72	885x569x910	955x640x960
WC/WD-230(A)	230	-15~-18℃	156	1.65	65	72	56	1140x569x910	1210x640x960
WC/WD-270(A)	270	-15~-18℃	183	1.75	69	78	52	1280x569x910	1350x640x960
WC/WD-330(A)	330	-15~-18℃	226	1.85	80	93	50	1310x659x930	1380x730x980
WCD-190(A)	190	0~-10/-15~-18℃	145	1.4	60	67	66	1020x569x910	1090x640x960
WCD-218(A)	218	0~-10/-15~-18℃	156	1.55	66	73	56	1140x569x910	1210x640x960
WCD-258(A)	258	0~-10/-15~-18℃	183	1.65	70	79	52	1280x569x910	1350x640x960
WCD-318S(A)	318	0~-10/-15~-18℃	206	1.7	82	95	50	1310x659x930	1380x730x980

超市柜系列 SUPERMARKET CABINET SERIES



LFG-20Y
LFG-25Y

风幕柜 (外置机组)

Supermarket Cabinet Series (External unit)

型号 Model	外型尺寸 Dimension(mm)	容积 Capacity(L)	制冷功率 Cooling power(W)	照明功率 Lighting Power(W)	电压 Voltage(V)	温度 Temperature	备注 Remarks
LFG-12	1200x800x1950	520	920	240	220V	2~10℃	一体机组 One machine
LFG-15	1500x800x1950	850	1100	240	220V	2~10℃	一体机组 One machine
LFG-20	2000x950x1950	1000	1300	240	220V	2~10℃	一体机组 One machine
LFG-25	2500x950x1950	1280	1500	360	220V	2~10℃	一体机组 One machine
LFG-20Y	2000x1100x2060	1300	---	240	220/380V	2~10℃	分体机组 Split type group
LFG-25Y	2500x1100x2060	1690	---	360	220/380V	2~10℃	分体机组 Split type group

风冷循环 制冷强劲 Strong Cooling For Cold Air Circulation

立式风幕柜系列,产品采用大面积高效蒸发器,强力风冷形成全方位循环冷流,充分到达柜内每一个角落,保证物品受冷均匀,冷藏效果更佳。全景式外观设计,柜内商品清晰展示,顾客选购更加方便快捷,适合于各超市、卖场等大型商业场所使用。

With the large-area efficient steamer and strong cooling that form the full-oriented cold air circulation, the vertical freezer can breeze the air to every corner of the freezer, guarantee the even cooling of objects, and improve the freezer effect. Besides, with the panoramic appearance design, the customers may see the goods inside clearly, and make their shopping more convenient and fast. This product is applicable for supermarkets, malls and other shopping places.



LFG-12 LFG-20
LFG-15 LFG-25

风幕柜 (内置机组)

Supermarket Cabinet Series (Built-In unit)



柜体可选颜色
Optional cabinet color
(可根据客户要求定制)
Can be customized



生鲜肉食柜 Fresh Meat Cabinet

型号 Model	外型尺寸 Dimension(mm)	容积 Capacity(L)	制冷功率 Cooling power(W)	化霜功率 Defrost power(W)	照明功率 Lighting Power(W)	电压 Voltage(V)	温度 Temperature	备注 Remarks
XFG-20	2000x1180x900	460	780	500	40	220	-2~8℃	一体机组 One machine
XFG-25	2500x1180x900	580	980	800	60	220	-2~8℃	一体机组 One machine

SUPERMARKET CABINET SERIES 超市柜系列

冷热熟食柜

Cold and Hot Cooked Foods Cabinet

型号 Model	外型尺寸 Dimension(mm)	容积 Capacity(L)	制冷/加热功率 Cool/Hot Power(W)	电压 Voltage(V)	温度 Temperature	备注 Remarks
SFG-20	2000x1180x1280	650	490制冷 (Cool)	220V	2~-8℃	(内) 不锈钢 (外) 烤漆
SFG-25	2500x1180x1280	850	730制冷 (Cool)	220V	2~-8℃	(内) 不锈钢 (外) 烤漆
SFG-20K	2000x1180x1280	650	730制冷 (Cool)	220V	2~-8℃	(内) 不锈钢 (外) 烤漆
SFG-25K	2500x1180x1280	850	730制冷 (Cool)	220V	2~-8℃	(内) 不锈钢 (外) 烤漆
SFG-20	2000x1180x1280	650	1600加热 (Hot)	220V	30~65℃	(内) 不锈钢 (外) 烤漆
SFG-25	2500x1180x1280	850	2000加热 (Hot)	220V	30~65℃	(内) 不锈钢 (外) 烤漆
SFG-20K	2000x1180x1280	650	1500加热 (Hot)	220V	30~65℃	(内) 不锈钢 (外) 烤漆
SFG-25K	2500x1180x1280	850	2000加热 (Hot)	220V	30~65℃	(内) 不锈钢 (外) 烤漆



冷热熟食柜(后推门带前掀门)

Cold and Hot Cooked Foods Cabinet

柜体可选颜色
Optional cabinet color
(可根据客户要求定制)
Can be customized



岛柜

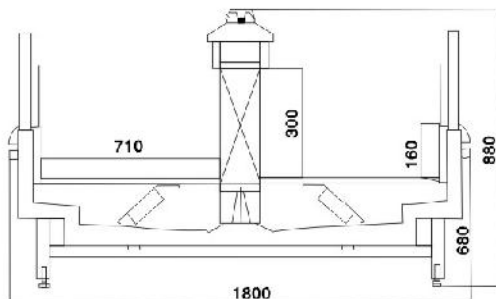
Island Cabinet

主要特点 FEATURES

产品采用宽面敞式设计,柜内食品尽收眼底,存取物品方便自如,是超市、大型综合商场展示销售各种冷冻、冷藏食品的最佳选择。

Scoolman Island freezers,taking the wide rangeopen design to show the foods insideclearly forthe convenience of the customers to get the foodseasily ,are the best choice to show and sell various frozen and cold goods in supermarkets and malls.

型号 Model	外型尺寸 Dimension(mm)	容积 Capacity(L)	展示面积m ² Panoptic area	电压 Voltage(V)	温度 Temperature	备注 Remarks
WD-20N	2000x1080x950	520	2.1	220V	-18℃~-22℃	一体机组 One machine
WD-25N	2500x1080x950	680	2.5	220V	-18℃~-22℃	一体机组 One machine
WD-20	2000x1280x880	760	2.3	220/380V	-18℃~-22℃	分体机组 Split type
WD-25	2500x1280x880	960	2.7	220/380V	-18℃~-22℃	分体机组 Split type
WD-20	2000x1800x880	1100	4.5	220/380V	-18℃~-22℃	分体机组 Split type
WD-25	2500x1800x880	1460	5.6	220/380V	-18℃~-22℃	分体机组 Split type
WDS-50	2000x1800x890	3000	11	380V	-18℃~-22℃	分体机组 Split type



岛柜

Island Cabinet

超市柜系列 SUPERMARKET CABINET SERIES

便利店饮品自选冷藏展示柜 Vertical connected cabinet



SCLG4-450FZ(1door)

SCLG4-1000FZ(2door)

主要特点

- 1.超大容积设计, 超高门体最高可达1.85米;
- 2.特别设计的全不锈钢门铰, 耐用, 永不生锈;
- 3.自动回归门, 有效防止冷量流失, 90° 静止, 存放物品非常方便;
- 4.柜内装有照明灯, 顶部设有广告灯箱;
- 5.高密度发泡料, 加厚发泡层, 保温性能好, 制冷速度快;

FEATURES

- 1.Large volume design, ultra-high door up to 1.85 meters;
- 2.Specially designed stainless steel door hinges,durable and never rusty;
- 3.Self-closing door,effectively preventing the loss of cooled air, opening at 90° ,very convenient for carrying goods;
- 4.Cabinet with lights,advertisement light box at the top there;
- 5.High-density foam material,foam layer thickening,good insulation, cooling speed;

可选配置

- 1.机组可一体化或外置分体安装; 2.可根据场地大小设计制作;

Options

- 1.The unit can be integrated or separated installation;
- 2.The unit can be integrated in accordance with the space of location;

型号 Model	容积(L) Volume	额定功率(W) Power	电压 Voltage	温度 Temperature	耗电量 electricity consumption	外型尺寸 Size
SCLG4-450FZ(1door)	488	725	220V/50Hz	+2~+8℃	11.6	660x800x2080mm
SCLG4-490FZ(1doors)	488	725	220V/50Hz	+2~+8℃	11.6	636x850x2080mm
SCLG4-1000FZ(2doors)	1043	1030	220V/50Hz	+2~+8℃	16.4	1270x800x2080mm
SCLG4-1050FZ(2doors)	1043	1230	220V/50Hz	+2~+8℃	19.6	1268x800x2080mm
SCLG4-1500FZ(3doors)	1617	1340	220V/50Hz	+2~+8℃	21.4	1900x800x2080mm
SCLG4-1800FZ(3doors)	1617	1430	220V/50Hz	+2~+8℃	22.8	1900x800x2080mm
SCLG4-2010FZ(4doors)	2192	1970	220V/50Hz	+2~+8℃	31.5	2532x800x2080mm
SCLG4-2100FZ(4doors)	2192	1530	220V/50Hz	+2~+8℃	24.4	2532x800x2080mm

便利店饮品自选冷藏展示柜 Vertical connected cabinet

主要特点

- 1.超大容积设计, 超高门体最高可达1.85米;
- 2.特别设计的全不锈钢门铰, 耐用, 永不生锈;
- 3.自动回归门, 有效防止冷量流失, 90° 静止, 存放物品非常方便;
- 4.柜内装有照明灯, 顶部设有广告灯箱;
- 5.高密度发泡料, 加厚发泡层, 保温性能好, 制冷速度快;

FEATURES

- 1.Large volume design, ultra-high door up to 1.85 meters;
- 2.Specially designed stainless steel door hinges,durable and never rusty;
- 3.Self-closing door,effectively preventing the loss of cooled air, opening at 90° ,very convenient for carrying goods;
- 4.Cabinet with lights,advertisement light box at the top there;
- 5.High-density foam material,foam layer thickening,good insulation, cooling speed;

可选配置

- 1.机组可一体化或外置分体安装; 2.可根据场地大小设计制作;

Options

- 1.The unit can be integrated or separated installation;
- 2.The unit can be integrated in accordance with the space of location;



SCLG4-1500FZ(3door)

SUPERMARKET CABINET SERIES 超市柜系列

立式超市柜系列 Vertical Showcase series for supermarket



PGI.6L3W



PGI.2L2W

主要特点

- 1.采用名牌全封闭压缩机,噪音低,耗电小。
- 2.风机强制冷风循环,制冷速度快,温度均匀。
- 3.采用数字显示和微电脑智能控温技术,使产品工作状态及柜内温度一目了然。
- 4.采用优质彩钢板设计,经久耐用,便于清洁;箱体、门体采用高压聚脲发泡成型,保温效果好。
- 5.整体精心设计,制冷速度较同类产品更加快捷。
- 6.可拆式门封条,清洗更方便。
- 7.高强度可调试层架,方便物体放置。

FEATURES

It uses the famous closed compressor with low noise and low power consumption.
Dual-temperature design for both freezing and refrigerating to store the foods of different temperature requirements conveniently at the same time.
Digital display and advanced microcomputer intelligent temperature control technology are adopted for the display of the working state and the inside temperature.
Quality color steel plate, durable, convenient for clean.
Careful integral design with quicker refrigeration speed compared with products of the same kind.
The removable door seals is easier for cleaning.
High strength adjustable shelf, convenient in placing goods.

型号 Model	容积(L) Volume	温度 Temperature	额定功率(W) Power	制冷方式 Mode of refrigeration	外型尺寸 Size
PGI.2L2W	1200	+2℃~+10℃	850W	风冷	1400x700x2200mm
PGI.6L3W	1560	+2℃~+10℃	800W	风冷	1800x700x2200mm
PG2.4L4W	2400	+2℃~+10℃	1350W	风冷	2600x700x2200mm

主要特点

- 1.人性化设计温控安装角度更易于辨认;
- 2.高密度发泡料,加厚发泡层,保温性能好;
- 3.使用安全电压的除雾中空保温玻璃,清晰明亮,降低能耗;
- 4.可拆卸通风百叶窗,便于检修机组;
- 5.柜内装有照明灯,顶部设有广告灯箱;
- 6.底部脚轮带刹车;

FEATURES

- 1.Humanized design of thermostat installation fir easier identifying.
- 2.High-density foam material,foam layer thickening,good insulation.
- 3.Safety vottage Insulation hollow glass,clear and bright, reducing power consumption.
- 4.Removable ventilation louvers for easier maintenance.
- 5.Cabinet with lights,advertisement light box at the top there.
- 6.Castors with brake.

可选配置

- 1.颜色:银色、金色、白色;
- 2.玻璃:中空隔热、安全除雾压力平衡玻璃;
- 3.底部脚轮可选用带刹脚轮;
- 4.电压:220V/60Hz或110V/60Hz;

Options

- 1.Color:silver,gold,white.
- 2.Door:Safety defrosting glass(the minimum temperature can reach-25℃) or stainless steel(the minimum temperature can reach-35℃).
- 3.Material:stainless steel or color steel.
- 4.Voltage:220V/60Hz or 110V/60Hz.

Ice cream showcase(Vertical) 冰淇淋自选展示柜



SCLG4-450FZ



SCLG4-1000FZ

型号 Model	外型尺寸 Size	温度 Temperature	制冷剂 Refrigerant
SCLG4-450FZ	660x800x2030mm	-21~-25℃	R404a
SCLG4-1000FZ	1255x800x2030mm	-21~-25℃	R404a

自助餐展示柜系列 BUFFET DISPLAY CABINETS SERIES



豪华式方型沙拉台
Square Salad Bar

E-P1600FL8

额定功率 IP(W):705
电 源 RV(V/Hz):220~240/50~60
柜内温度 WT(°C):2~10
外型尺寸 D(WxDxH)(mm):1600x1600x1800
制 冷 剂 REFRIGERANT:R134/R404



豪华式圆型沙拉台
Round Type Salad Bar

E-P1800FL8

额定功率 IP(W):705
电 源 RV(V/Hz):220~240/50~60
柜内温度 WT(°C):2~10
外型尺寸 D(WxDxH)(mm):1800x1800x1800
制 冷 剂 REFRIGERANT:R134/R404

BUFFET DISPLAY CABINETS SERIES 自助餐展示柜系列

开放式槽沙拉台 2-channel Containers Salad Bar

E-P18702L8

额定功率 IP(W):560
电 源 RV(V/Hz):220/50
柜内温度 WT(°C):0~10
外型尺寸 D(WxDxH)(mm):1870x1550x1600
制 冷 剂 REFRIGERANT:R134/R404



单面趟门式沙拉台 Sliding Door Salad Bar

E-H1580ZL4

额定功率 IP(W):520
电 源 RV(V/Hz):220/50
柜内温度 WT(°C):2~10
外型尺寸 D(WxDxH)(mm):1580x800x1380
制 冷 剂 REFRIGERANT:R134/R404

E-H1910ZL5

额定功率 IP(W):705
电 源 RV(V/Hz):220/50
柜内温度 WT(°C):2~10
外型尺寸 D(WxDxH)(mm):1910x800x1380
制 冷 剂 REFRIGERANT:R134/R404

自助餐展示柜系列 BUFFET DISPLAY CABINETS SERIES

揭盖式靠墙沙拉台 Hoodl Type Salad Bar

M-P1560Z4

额定功率 IP(W):480
电 源 RV(V/HZ):200/50
柜内温度 WT(°C):0~10
外型尺寸 D(WxDxH)(mm):1560x780x1220
制 冷 剂 REFRIGERANT:R134/R404

M-P1890Z5

额定功率 IP(W):520
电 源 RV(V/HZ):200/50
柜内温度 WT(°C):0~10
外型尺寸 D(WxDxH)(mm):1890x780x1220
制 冷 剂 REFRIGERANT:R134/R404



开放式靠墙沙拉台 Wall-side Salad Bar

M-P1590FL4

额定功率 IP(W):520
电 源 RV(V/HZ):220/50
柜内温度 WT(°C):2~10
外型尺寸 D(WxDxH)(mm):1590x800x1380
制 冷 剂 REFRIGERANT:R134/R404

M-P1920FL5

额定功率 IP(W):705
电 源 RV(V/HZ):220/50
柜内温度 WT(°C):2~10
外型尺寸 D(WxDxH)(mm):1920x800x1380
制 冷 剂 REFRIGERANT:R134/R404

M-2250FL6

额定功率 IP(W):980
电 源 RV(V/HZ):220/50
柜内温度 WT(°C):2~10
外型尺寸 D(WxDxH)(mm):2250x800x1380
制 冷 剂 REFRIGERANT:R134/R404



双面趟门沙拉台 Island Type Sliding-door Salad Bar

M-H1490ZL4

额定功率 IP(W):480
电 源 RV(V/HZ):220/50
柜内温度 WT(°C):2~10
外型尺寸 D(WxDxH)(mm):1490x750x1380
制 冷 剂 REFRIGERANT:R134/R404

M-H1820ZL5

额定功率 IP(W):560
电 源 RV(V/HZ):220/50
柜内温度 WT(°C):2~10
外型尺寸 D(WxDxH)(mm):1820x750x1380
制 冷 剂 REFRIGERANT:R134/R404

M-H2150ZL6

额定功率 IP(W):640
电 源 RV(V/HZ):220/50
柜内温度 WT(°C):2~10
外型尺寸 D(WxDxH)(mm):2150x750x1380
制 冷 剂 REFRIGERANT:R134/R404



BUFFET DISPLAY CABINETS SERIES 自助餐展示柜系列



开放式双面大理石沙拉台
Marble Island Type Salad Bar

M-H1820FL4

额定功率 IP(W):705
电 源 RV(V/Hz):220/50
柜内温度 WT(°C):2~10
外型尺寸 D(WxDxH)(mm):1820x1050x1380
制 冷 剂 REFRIGERANT:R134/R404

E-H2150FL5

额定功率 IP(W):705
电 源 RV(V/Hz):220/50
柜内温度 WT(°C):2~10
外型尺寸 D(WxDxH)(mm):2150x1050x1380
制 冷 剂 REFRIGERANT:R134/R404

开放式双面大理石沙拉台
Marble Island Type Salad Bar

M-H1820FL4

额定功率 IP(W):520
电 源 RV(V/Hz):220/50
柜内温度 WT(°C):2~10
外型尺寸 D(WxDxH)(mm):1820x1050x1380
制 冷 剂 REFRIGERANT:R134/R404

M-H2150FL5

额定功率 IP(W):705
电 源 RV(V/Hz):220/50
柜内温度 WT(°C):2~10
外型尺寸 D(WxDxH)(mm):2150x1050x1380
制 冷 剂 REFRIGERANT:R134/R404



双面开放式沙拉台
Double-side Salad Bar

M-H1590ZL4

额定功率 IP(W):480
电 源 RV(V/Hz):220/50
柜内温度 WT(°C):2~10
外型尺寸 D(WxDxH)(mm):1590x750x1380
制 冷 剂 REFRIGERANT:R134/R404

M-H1920ZL5

额定功率 IP(W):580
电 源 RV(V/Hz):220/50
柜内温度 WT(°C):2~10
外型尺寸 D(WxDxH)(mm):1920x750x1380
制 冷 剂 REFRIGERANT:R134/R404

M-H2250ZL6

额定功率 IP(W):705
电 源 RV(V/Hz):220/50
柜内温度 WT(°C):2~10
外型尺寸 D(WxDxH)(mm):2250x750x1380
制 冷 剂 REFRIGERANT:R134/R404



蛋糕展示柜 | 系列

■ CAKE SHOW CASE



落地式双温蛋糕展示柜

Floor Double Temperature Cake Show Cabinet

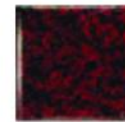


以下颜色可供选择：

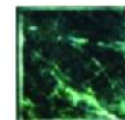
Following colors are available:



黄色
Yellow



红色
Red



绿色
Green

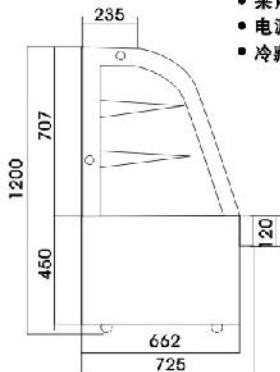


黑色
Black

2°C~8°C/40°C~75°C

- 外装饰有四款颜色大理石或不锈钢可供选择，美观实用。
- 万向活动脚轮，移动方便。
- 整体活动式层架可自由取出，清洁方便。
- 层架高度可自由调节，存取物品方便自如。
- 强制风冷循环方式，制冷速度快，温度均匀，不同层架的温差低于1°C。
- 机组可整体抽出，清理维护极其方便。
- 高精度电子温控，液晶数字清晰显示温度。
- 中空夹胶安全发热玻璃，安全系数高，在高温环境下不结雾，保证可视度。
- 中高压封闭式压缩机，节能安静。
- 自动化霜系统，化霜水自动蒸发。
- 采用R134A制冷剂，无氟环保。
- 电源、电压、频率可依客户要求。
- 冷藏间室温度2°C~8°C，制热温度达40°C~75°C。

1. 4 colors of marble or stainless steel are available, beautiful and practical.
2. Universal foot wheel, convenient for moving.
3. The integrated flexible rack can be removed freely, convenient for cleaning.
4. The rack height is adjustable, convenient for storing and taking goods.
5. Compulsory air cooling circulation, fast refrigerating, even temperature, the temperature difference of different racks is less than 1°C.
6. The unit can be drawn out as a whole structure, very convenient for maintaining and cleaning.
7. Precise electronic temperature control, clearly display temperature with LCD.
8. Hollow safe heating glass, high safe coefficient, do not cause frog in the damp environment, assure clear vision.
9. Middle and high pressure closed compressor, energy saving and silent working.
10. Automatic defrosting system, automatically evaporate the water.
11. Apply R134A refrigerant, free of Freon, environment protective.
12. The power supply, voltage and frequency are customized according to client's demands.
13. The temperature of the refrigerating room ranges 2°C~8°C, the temperature of heating room reaches 40°C~75°C.



型号 Model	尺寸 Size	容积 Volume	层数 Rise	功率 Power	净重 Weight
D750A	1500x730x1200	195x2L	3	1293W	240KGS
D760A	1800x730x1200	238x2L	3	1381W	275KGS
D780A	2400x730x1200	323x2L	3	1581W	345KGS
D850A	1500x840x1200	225x2L	3	1338W	265KGS
D860A	1800x840x1200	275x2L	3	1426W	300KGS
D880A	2400x840x1200	375x2L	3	1651W	375KGS

CAKE SHOW CASE SERIES 蛋糕展示柜系列



2°C~8°C

落地式单温蛋糕展示柜
Floor Single Temperature Cake Show Cabinet

CE

型号 Model	尺寸 Size(mm)	容积 Volume	层数 Rise	功率 Power	净重 Weight
GF740BF	1200x730x1500	560L	4	766W	280KGS
GF750BF	1500x730x1500	710L	4	940W	320KGS
GF780BF	1800x730x1500	860L	4	1007W	380KGS



2°C~8°C

落地式单温蛋糕展示柜
Floor Single Temperature Cake Show Cabinet

CE

型号 Model	尺寸 Size(mm)	容积 Volume	层数 Rise	功率 Power	净重 Weight
S730V	900x730x1200	285L	3	626W	185KGS
S740V	1200x730x1200	390L	3	773W	225KGS
S750V	1500x730x1200	500L	3	931W	260KGS
S760V	1800x730x1200	610L	3	992W	300KGS
S780V	2400x730x1200	825L	3	1320W	380KGS



2°C~8°C

落地式单温蛋糕展示柜
Floor Single Temperature Cake Show Cabinet

CE

型号 Model	尺寸 Size(mm)	容积 Volume	层数 Rise	功率 Power	净重 Weight
S730A	900x730x1200	225L	3	633W	200KGS
S740A	1200x730x1200	310L	3	780W	280KGS
S750A	1500x730x1200	395L	3	937W	320KGS
S760A	1800x730x1200	480L	3	999W	360KGS
S780A	2400x730x1200	650L	3	1354W	485KGS



2°C~8°C

落地式单温蛋糕展示柜
Floor Single Temperature Cake Show Cabinet

CE

型号 Model	尺寸 Size(mm)	容积 Volume	层数 Rise	功率 Power	净重 Weight
LM730V	900x720x1040	285L	2	541W	215KGS
LM740V	1200x720x1040	390L	2	647W	260KGS
LM750V	1500x720x1040	500L	2	706W	300KGS
LM760V	1800x720x1040	610L	2	881W	345KGS
LM780V	2400x720x1040	825L	2	1149W	435KGS

CAKE SHOW CASE SERIES 蛋糕展示柜系列



2℃~8℃

落地式单温蛋糕展示柜
Floor Single Temperature Cake Show Cabinet



型号 Model	尺寸 Size(mm)	容积 Volume	层数 Rise	功率 Power	净重 Weight
S930AF	900x840x1370	340L	4	530W	218KGS
S940AF	1200x840x1370	470L	4	665W	263KGS
S950AF	1500x840x1370	600L	4	705W	303KGS
S960AF	1800x840x1370	730L	4	840W	348KGS
S980AF	2400x840x1370	990L	4	1020W	438KGS

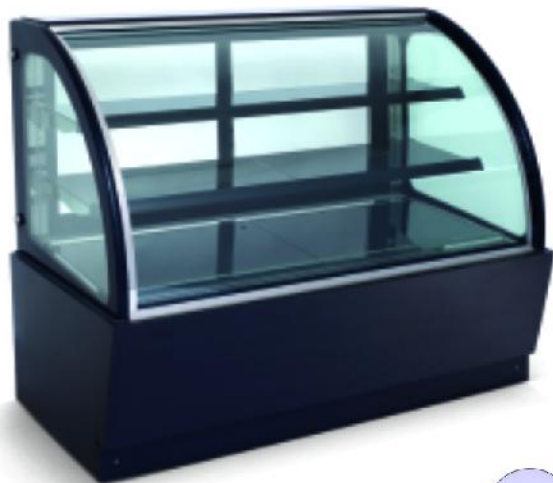


2℃~8℃

落地式单温蛋糕展示柜
Floor Single Temperature Cake Show Cabinet



型号 Model	尺寸 Size(mm)	容积 Volume	层数 Rise	功率 Power	净重 Weight
M730V	900x680x1200	285L	3	628W	215KGS
M740V	1200x680x1200	390L	3	769W	260KGS
M750V	1500x680x1200	500L	3	923W	300KGS
M760V	1800x680x1200	610L	3	990W	345KGS
M780V	2400x680x1200	825L	3	1314W	435KGS



2℃~8℃

落地式单温蛋糕展示柜
Floor Single Temperature Cake Show Cabinet



型号 Model	尺寸 Size(mm)	容积 Volume	层数 Rise	功率 Power	净重 Weight
Q930A	900x780x1200	269L	3	583W	185KGS
Q940A	1200x780x1200	372L	3	712W	225KGS
Q950A	1500x780x1200	474L	3	848W	280KGS
Q960A	1800x780x1200	576L	3	909W	300KGS
Q980A	2400x780x1200	781L	3	1247W	380KGS



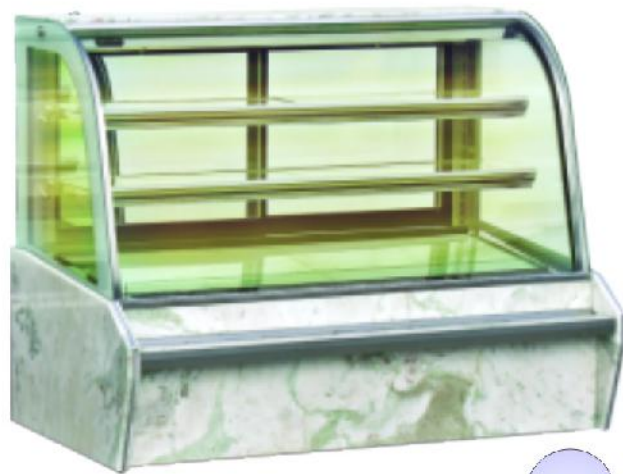
2℃~8℃

落地式单温蛋糕展示柜
Floor Single Temperature Cake Show Cabinet



型号 Model	尺寸 Size(mm)	容积 Volume	层数 Rise	功率 Power	净重 Weight
U730V	900x720x1200	302L	3	590W	215KGS
U740V	1200x720x1200	417L	3	723W	260KGS
U750V	1500x720x1200	532L	3	860W	300KGS
U760V	1800x720x1200	647L	3	924W	345KGS

蛋糕展示柜系列 CAKE SHOW CASE SERIES



2°C~8°C

大理石蛋糕冷藏展示柜
Marble showcase(Single curve)

型号 Model	温度 Temperature (°C)	额定功率 Rated Input (W)	制冷剂 Refrigerant	容积 Volume (L)	外形尺寸 Size (mm)	电压 Voltage (V)
SCLG4-378FD	2-8	845	R22/R134a	282	1200x830x1200	220/50Hz
SCLG4-480FD	2-8	945	R22/R134a	454	1500x830x1200	220/50Hz
SCLG4-580FD	2-8	1045	R22/R134a	551	1800x830x1200	220/50Hz
SCLG4-680FD	2-8	1145	R22/R134a	616	2000x830x1200	220/50Hz



2°C~8°C

大理石蛋糕冷藏展示柜
Marble showcase(4 shelves)

型号 Model	温度 Temperature (°C)	额定功率 Rated Input (W)	制冷剂 Refrigerant	容积 Volume (L)	外形尺寸 Size (mm)	电压 Voltage (V)
SCLG4-378FH4	2-8	765	R22/R134a	490	1200x800x1400	220
SCLG4-480FH4	2-8	1022	R22/R134a	625	1500x800x1400	220
SCLG4-580FH4	2-8	1264	R22/R134a	760	1800x800x1400	220
SCLG4-680FH4	2-8	1264	R22/R134a	850	2000x800x1400	220



2°C~8°C

蛋糕冷藏展示柜(单温)
Marble showcase(Single temperature)

型号 Model	温度 Temperature (°C)	额定功率 Rated Input (W)	制冷剂 Refrigerant	容积 Volume (L)	外形尺寸 Size (mm)	电压 Voltage (V)
SCLG4-430SK	2-8	776	R22/R134a	465	1200x700x1400	220
SCLG4-560SK	2-8	1013	R22/R134a	600	1500x700x1400	220
SCLG4-690SK	2-8	1214	R22/R134a	720	1800x700x1400	220
SCLG4-750SK	2-8	1233	R22/R134a	810	2000x700x1400	220

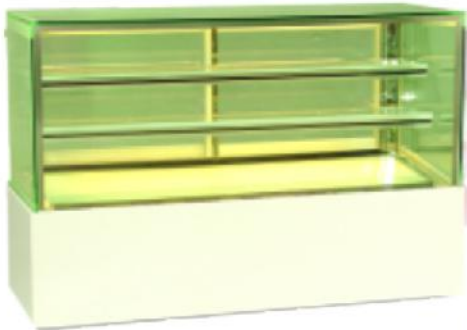


2°C~8°C

欧式蛋糕冷藏展示柜
European style cake showcase

型号 Model	温度 Temperature (°C)	额定功率 Rated Input (W)	制冷剂 Refrigerant	容积 Volume (L)	外形尺寸 Size (mm)	电压 Voltage (V)
SCLG4-470FC	2-8	1018	R22/R134a	550	1200x815x1400	220
SCLG4-610FC	2-8	998	R22/R134a	700	1500x815x1400	220
SCLG4-730FC	2-8	1434	R22/R134a	850	1800x815x1400	220
SCLG4-810FC	2-8	1434	R22/R134a	950	2000x815x1400	220

CAKE SHOW CASE SERIES 蛋糕展示柜系列



2℃~8℃

直角形蛋糕冷藏展示柜
Square showcase (2 shelves)

型号 Model	柜内温度 Temperature	功率 Power	制冷剂 Refrigrant	容积 Volume	尺寸 Size(mm)
SCLG4-340FK2	2℃~8℃	590W	R134a	382L	1200x700x1050
SCLG4-430FK2	2℃~8℃	827W	R134a	487L	1500x700x1050
SCLG4-520FK2	2℃~8℃	900W	R134a	590L	1800x700x1050
SCLG4-580FK2	2℃~8℃	924W	R134a	660L	2000x700x1050
SCLG4-710FK2	2℃~8℃	1270W	R134a	800L	2400x700x1050



2℃~10℃

(PC)二层日式直角保鲜柜(顶45° 接驳)
Japanese Type Lantern Triangle Fresh-keeping Cabinet

型号 Model	柜内温度 Temperature	功率 Power	制冷剂 Refrigrant	重量 N.W	尺寸 Size(mm)
PC-1200	2℃~10℃	780W	R134a	140kg	1200x700x1100
PC-1500	2℃~10℃	870W	R134a	160kg	1500x700x1100
PC-1800	2℃~10℃	1050W	R134a	200kg	1800x700x1100
PC-2000	2℃~10℃	1350W	R134a	240kg	2000x700x1100
PC-2400	2℃~10℃	1530W	R134a	280kg	2400x700x1100



2℃~10℃

(PD)日式灯箱直角保鲜柜
Japanese Type Lantern Triangle Fresh-keeping Cabinet

型号 Model	柜内温度 Temperature	功率 Power	制冷剂 Refrigrant	重量 N.W	尺寸 Size(mm)
PD-1200	2℃~10℃	780W	R134a	140kg	1200x700x1200
PD-1500	2℃~10℃	870W	R134a	160kg	1500x700x1200
PD-1800	2℃~10℃	1050W	R134a	200kg	1800x700x1200
PD-2000	2℃~10℃	1350W	R134a	240kg	2000x700x1200
PD-2400	2℃~10℃	1530W	R134a	280kg	2400x700x1200



2℃~10℃

(RE)二层双弯豪华型蛋糕柜
Double Layer Double Bending Deluxe Type Cake Cabinet

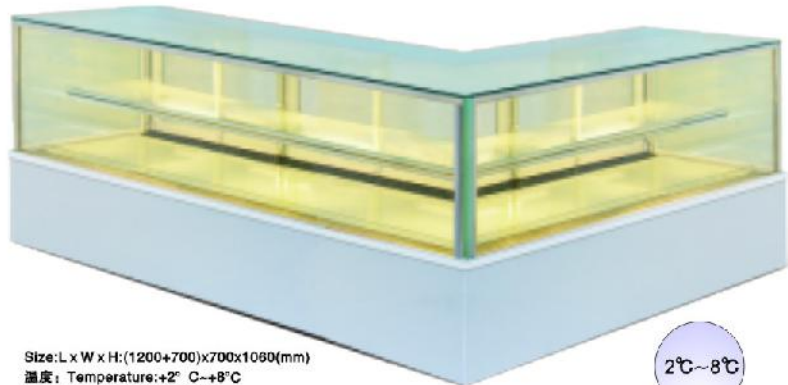
型号 Model	柜内温度 Temperature	功率 Power	制冷剂 Refrigrant	重量 N.W	尺寸 Size(mm)
RE-1200	2℃~10℃	680W	R134a	120kg	1200x850x1100
RE-1500	2℃~10℃	760W	R134a	140kg	1500x850x1100
RE-1800	2℃~10℃	870W	R134a	175kg	1800x850x1100
RE-2000	2℃~10℃	950W	R134a	210kg	2000x850x1100
RE-2400	2℃~10℃	1180W	R134a	240kg	2400x850x1100

可选配置:

- 1.玻璃: 安全除雾压力平衡玻璃
- 2.可选择制冷柜或制热柜或常温柜
- 3.柜体下部设计大理石或不锈钢(大理石可选择天然石或人造大理石, 颜色亦可根据客户要求来选择)
- 4.电压: 220V/60Hz或110V/60Hz

Options:

- 1.Safety glass with heater defrosting and pressure balanced function
- 2.Refrigerating or heating or ambient temperature
- 3.Stainless steel, marble or artificial stone (the color can be selected according to the customer request)
- 4.Voltage: 220V/60Hz or 110V/60Hz



2℃~8℃

Size: L x W x H: (1200+700)x700x1080(mm)
温度: Temperature: +2℃~+8℃
制冷剂: Refrigerant: R134a

蛋糕展示柜系列 CAKE SHOW CASE SERIES



2°C~10°C

(RG)枕头脚柜 ZhenTouJiaoGui

型号 Model	柜内温度 Temperature	功率 Power	制冷剂 Refrigrant	重量 N.W	尺寸 Size(mm)
RG-1200	2°C~10°C	680W	R134a	120kg	1200x740x1200
RG-1500	2°C~10°C	760W	R134a	140kg	1500x740x1200
RG-1800	2°C~10°C	870W	R134a	176kg	1800x740x1200
RG-2000	2°C~10°C	950W	R134a	210kg	2000x740x1200



2°C~10°C

(RA)双弯型豪华蛋糕柜 Double-arc curved cake showcase

型号 Model	柜内温度 Temperature	功率 Power	制冷剂 Refrigrant	重量 N.W	尺寸 Size(mm)
RA-1200	2°C~10°C	680W	R134a	120kg	1200x740x1200
RA-1500	2°C~10°C	760W	R134a	140kg	1500x740x1200
RA-1800	2°C~10°C	870W	R134a	175kg	1800x740x1200
RA-2000	2°C~10°C	950W	R134a	210kg	2000x740x1200



2°C~10°C

(HLB)欧式前开门保鲜柜 European style refrigerated display case

型号 Model	柜内温度 Temperature	功率 Power	制冷剂 Refrigrant	重量 N.W	尺寸 Size(mm)
HLB-1200	2°C~10°C	780W	R134a	150kg	1200x876x1600
HLB-1600	2°C~10°C	910W	R134a	180kg	1600x876x1600
HLB-1800	2°C~10°C	1210W	R134a	210kg	1800x876x1600
HLB-2000	2°C~10°C	1620W	R134a	260kg	2000x876x1600



2°C~10°C

(AB)精致型前开门保鲜柜 refrigerated display case

型号 Model	柜内温度 Temperature	功率 Power	制冷剂 Refrigrant	重量 N.W	尺寸 Size(mm)
AB-1200	2°C~10°C	680W	R134a	135kg	1200x740x1250
AB-1500	2°C~10°C	760W	R134a	150kg	1500x740x1250
AB-1800	2°C~10°C	870W	R134a	185kg	1800x740x1250
AB-2000	2°C~10°C	950W	R134a	230kg	2000x740x1250

CAKE SHOW CASE SERIES 蛋糕展示柜系列



2°C~10°C

(HE)豪华型全透明蛋糕展示柜
luxurious transparent cake showcase

型号 Model	柜内温度 Temperature	功率 Power	制冷剂 Refrigrant	重量 N.W	尺寸 Size(mm)
HE-1200	2°C~10°C	780W	R134a	150kg	1200x800x1690
HE-1500	2°C~10°C	910W	R134a	210kg	1500x800x1690
HE-1800	2°C~10°C	1210W	R134a	295kg	1800x800x1690



2°C~10°C

(HC)前开门立式保鲜展示柜
open door upright refrigerated display case upright refrigerated showcase

型号 Model	柜内温度 Temperature	功率 Power	制冷剂 Refrigrant	重量 N.W	尺寸 Size(mm)
HC-1200	2°C~10°C	780W	R134a	165kg	1200x740x1820
HC-1500	2°C~10°C	910W	R134a	210kg	1500x740x1820
HC-1800	2°C~10°C	1210W	R134a	310kg	1800x740x1820



2°C~10°C

大理石可根据要求选择 Marble can be selected according to requirements
(HT)精致型立式保鲜柜 Upright refrigerated showcase

型号 Model	柜内温度 Temperature	功率 Power	制冷剂 Refrigrant	重量 N.W	尺寸 Size(mm)
HT-1200	2°C~10°C	780W	R134a	166kg	1200x740x1820
HT-1500	2°C~10°C	910W	R134a	210kg	1500x740x1820
HT-1800	2°C~10°C	1210W	R134a	310kg	1800x740x1820



2°C~8°C

大理石可根据要求选择 Marble can be selected according to requirements
大理石蛋糕冷藏展示柜 Marble showcase

型号 Model	柜内温度 Temperature	电压 Voltage	制冷剂 Refrigrant	重量 N.W	尺寸 Size(mm)
SCLG4-1080FH	2°C~8°C	220V/60Hz 110V/60Hz	R134a	---	1500x730x1860

蛋糕展示柜系列 CAKE SHOW CASE SERIES



(DB型)双边岛柜(带上推门)
Dual Side Island Cabinet (with Upper Push Door)
规格 Size:2000x1050x1370mm
额定功率 Voltage:230W
重量 N.W:220kg



抽屉展示柜 drawer display cabinets

RD-9盘组合蛋糕柜
规格 Size:1500x500x1370mm
额定功率 Voltage:120W
重量 N.W:140kg



组合柜 Combination Type



XID-CBR

转角型蛋糕组合柜 (可根据尺寸订做)
corner cake display(made according to sizes)

CAKE SHOW CASE SERIES 蛋糕展示柜系列



2°C~8°C

台式单温蛋糕展示柜
Countertop cold dell showcase CE

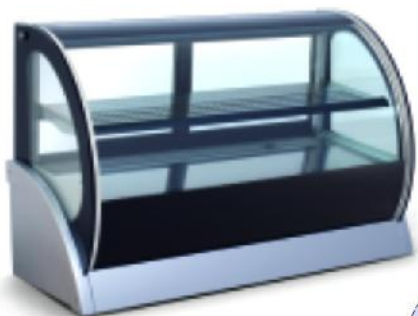
型号 Model	尺寸 Size(mm)	容积 Volume	层数 Rise	功率 Power	净重 Weight
M430	900x470x680	70L	2	340W	83KGS
M440	1200x470x680	94L	2	475W	90KGS
M450	1500x470x680	118L	2	495W	105KGS



40°C~75°C

台式单温蛋糕展示柜
Countertop hot pastry showcase CE

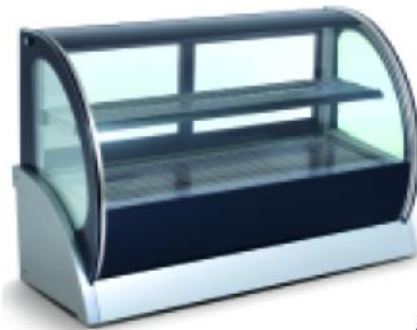
型号 Model	尺寸 Size(mm)	容积 Volume	层数 Rise	功率 Power	净重 Weight
H430	900x470x680	70L	2	765W	50KGS
H440	1200x470x680	94L	2	805W	85KGS
H450	1500x470x680	118L	2	845W	75KGS



2°C~8°C

台式单温蛋糕展示柜
Countertop hot pastry showcase CE

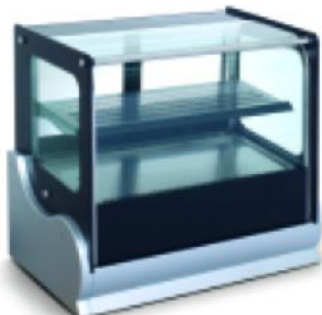
型号 Model	尺寸 Size(mm)	容积 Volume	层数 Rise	功率 Power	净重 Weight
S530A	900x540x790	115L	2	420W	90KGS
S540A	1200x540x790	155L	2	550W	105KGS
S550A	1500x540x790	200L	2	570W	120KGS



40°C~75°C

台式单温蛋糕展示柜
Countertop hot pastry showcase CE

型号 Model	尺寸 Size(mm)	容积 Volume	层数 Rise	功率 Power	净重 Weight
H-S530A	900x540x790	115L	2	765W	80KGS
H-S540A	1200x540x790	155L	2	805W	95KGS
H-S550A	1500x540x790	200L	2	845W	110KGS



2°C~8°C

台式单温蛋糕展示柜
Countertop hot pastry showcase CE

型号 Model	尺寸 Size(mm)	容积 Volume	层数 Rise	功率 Power	净重 Weight
A530V	900x540x790	140L	2	420W	90KGS
A540V	1200x540x790	190L	2	550W	105KGS
A550V	1500x540x790	240L	2	570W	120KGS



40°C~75°C

台式单温蛋糕展示柜
Countertop hot pastry showcase CE

型号 Model	尺寸 Size(mm)	容积 Volume	层数 Rise	功率 Power	净重 Weight
H-A530V	900x540x790	140L	2	765W	80KGS
H-A540V	1200x540x790	190L	2	805W	95KGS
H-A550V	1500x540x790	240L	2	845W	110KGS

蛋糕展示柜系列 CAKE SHOW CASE SERIES



2℃~8℃

CH型 弧形蛋糕展示柜(台式)
Cake display colder (Desktop)

型号 Model	尺寸 Size	容积 Volume	层数 Rise	功率 Power	毛重 Weight
CH-116A01	900x515x710	80L	2	400W	70KGS
CH-116A02	1200x515x710	105L	2	530W	80KGS
CH-116A03	1500x515x710	140L	2	660W	90KGS



40℃~75℃

C-G型 弧形保温陈列柜
Food display warmer

型号 Model	尺寸 Size	容积 Volume	层数 Rise	功率 Power	毛重 Weight
C-G-116A04	900x500x500	95L	2	480W	30KGS
C-G-116A05	1200x500x500	120L	2	880W	35KGS
C-G-116A06	1500x500x500	120L	2	980W	35KGS



(C-A型)四层点心恒温柜
4-layer Dim Sum Constant Temperature Cabinet

型号 Model	柜内温度 Temperature	功率 Power	制冷剂 Refrigerant	净重 Weight	尺寸 Size
C-A-1200	恒温	100W	--	80kg	1200x600x1150
C-A-1500	恒温	120W	--	100kg	1500x600x1150
C-A-1800	恒温	160W	--	120kg	1800x600x1150
C-A-2000	恒温	160W	--	140kg	2000x600x1150



(RO型)三层抽屉式直盘恒温柜
3-Layer Drawer Type Direct Tray Constant Temperature Cabinet

型号 Model	柜内温度 Temperature	功率 Power	制冷剂 Refrigerant	净重 Weight	尺寸 Size
RO-9盘	恒温	120W	--	100kg	1420x925x1350
RO-12盘	恒温	180W	--	150kg	1860x925x1350
RO-15盘	恒温	190W	--	180kg	2300x925x1350
RO-18盘	恒温	210W	--	210kg	2740x925x1350

巧克力冷藏展示柜 Chocolate showcase(Double temperature)



Size:L x W x H:1200x700x1050(mm)
温度: Temperature:上层+12° C~+14° C
下层+2° C~+8° C
制冷剂: Refrigerant:R134a

可选配置:

1. 下面可选择大理石或木板制作
2. 电压: 220V/50Hz或110V/60Hz

Options:

1. Bottom material: Marble or wood
2. Voltage: 220V/60Hz or 110V/60Hz

功能简介:

1. 单机双温, 上层冷藏展示可达到2~8° C或2~14° C, 下层冷冻储存最低温度可达到-7° C, 一机多用;
2. 展示效果佳, 保证巧克力所需的温度, 并能在室内相对湿度下加湿;

Options:

1. Double-temperature, the upper refrigeration display up to 2~8° C or 2~14° C, the lower frozen storage up to -7° C, multi-function
2. Good showing effect, to ensure the necessary temperature for chocolate, and increasing the relative humidity in the interior; this type of cabinet can also be used to take expensive medicine;

ICE CREAM SHOWCASE 冰淇淋展示柜系列



-18~-22℃



-18~-22℃

(GN1/3)冰淇淋展示柜
(GN1/3)ice cream showcase

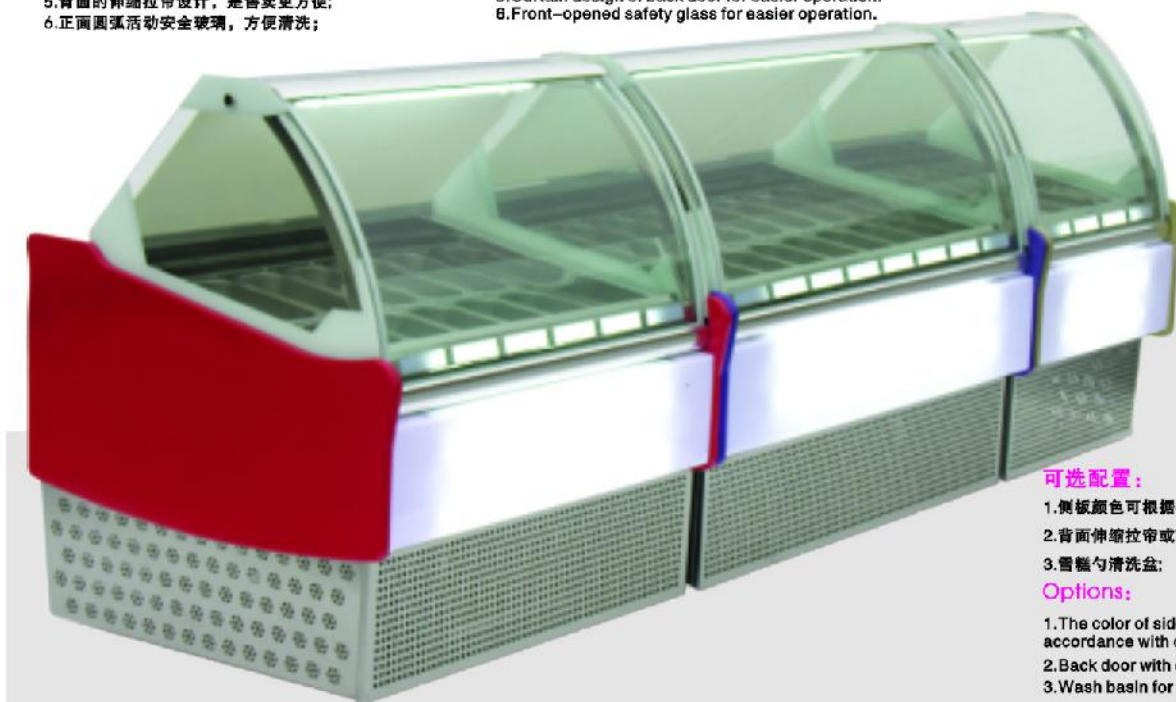
型号 Model	尺寸 Size	电压 Voltage(V)	份数量 The number of copies(PAN)	温度 Temp(℃)
WDB-V6	730x1120x1386	220V/50HZ	1/3Pan x 6Pcs	-18~-22℃
WDB-V8	905x1120x1386	220V/50HZ	1/3Pan x 8Pcs	-18~-22℃
WDB-V10	1080x1120x1386	220V/50HZ	1/3Pan x 10Pcs	-18~-22℃
WDB-V12	1255x1120x1386	220V/50HZ	1/3Pan x 12Pcs	-18~-22℃
WDB-V14	1430x1120x1386	220V/50HZ	1/3Pan x 14Pcs	-18~-22℃
WDB-V16	1605x1120x1386	220V/50HZ	1/3Pan x 16Pcs	-18~-22℃
WDB-V18	1780x1120x1386	220V/50HZ	1/3Pan x 18Pcs	-18~-22℃
WDB-V20	1955x1120x1386	220V/50HZ	1/3Pan x 20Pcs	-18~-22℃
WDB-V22	2130x1120x1386	220V/50HZ	1/3Pan x 22Pcs	-18~-22℃

功能简介:

1. 欧洲流行款式, 钢化除雾玻璃, 安全、清晰明亮;
2. 全自动迅速除霜装置, 免除人工化霜, 确保制冷效果;
3. 柜内采用冷气循环, 制冷速度快, 温度均匀;
4. 附带灯箱位, 可贴广告, 更显特色;
5. 背面的伸缩拉帘设计, 是售卖更方便;
6. 正面圆弧活动安全玻璃, 方便清洗;

Features:

1. European popular style, tempered glass with heater defrosting, safe and bright.
2. Automatic rapid defrosting device to ensure the cooling effect.
3. Cooled air circulation, cooling speed, temperature is even.
4. Front light box can be affixed with ads and logos.
5. Curtain design of back door for easier operation.
6. Front-opened safety glass for easier operation.



可选配置:

1. 侧板颜色可根据客户要求来选择;
2. 背面伸缩拉帘或有机械玻璃门;
3. 雪糕勺清洗盆;

Options:

1. The color of side panel can be selected in accordance with customer requirement.
2. Back door with curtain or sliding glass.
3. Wash basin for ice cream spoon.

冰淇淋展示柜系列 ICE CREAM SHOWCASE



V12M V18M
V14M

-18~-22℃



V6 V12 V18
V8 V14 V20
V10 V16 V22

-18~-22℃

(GN1/4)冰淇淋展示柜
(GN1/4)Ice cream showcase

型号 Model	尺寸 Size (Mm)	电压 Voltage(V)	份数 The number of copies(PAN)	温度 Temp [°C]
V12M	1230x970x1360	220V/50HZ	1/4Panx12Pcs	-18~-22℃
V14M	1630x970x1360	220V/50HZ	1/4Panx14Pcs	-18~-22℃
V18M	1800x970x1360	220V/50HZ	1/4Panx18Pcs	-18~-22℃
V6	750x938x1418	220V/50HZ	1/4Panx6Pcs	-18~-22℃
V8	925x938x1418	220V/50HZ	1/4Panx8Pcs	-18~-22℃
V10	1100x938x1418	220V/50HZ	1/4Panx10Pcs	-18~-22℃
V12	1275x938x1418	220V/50HZ	1/4Panx12Pcs	-18~-22℃
V14	1450x938x1418	220V/50HZ	1/4Panx14Pcs	-18~-22℃
V16	1625x938x1418	220V/50HZ	1/4Panx16Pcs	-18~-22℃
V18	1800x938x1418	220V/50HZ	1/4Panx18Pcs	-18~-22℃
V20	1975x938x1418	220V/50HZ	1/4Panx20Pcs	-18~-22℃
V22	2150x938x1418	220V/50HZ	1/4Panx22Pcs	-18~-22℃

可选配置:

- 1.侧板颜色可根据客户要求来选择;
- 2.柜内原配的份数盒,亦可按照客人要求改放1/3份数盒;
- 3.背面伸缩拉帘或有机玻璃趟门;
- 4.雪糕勺清洗盆;

Options:

- 1.The color of side panel can be selected in accordance with customer requirement.
- 2.The container can also be replaced in accordance with the request of the guest.
- 3.Back door with curtain or sliding glass.
- 4.Wash basin for ice cream spoon.

功能简介:

- 1.欧洲流行款式,钢化除雾玻璃、安全、清晰明亮;
- 2.全自动迅速除霜装置,免除人工化霜,确保制冷效果;
- 3.柜内采用冷气循环,制冷速度快,温度均匀;
- 4.附带灯箱位,可贴广告,更显特色;
- 5.背面的伸缩拉帘设计,是售卖更方便;
- 6.正面圆弧滑动安全玻璃,方便清洗;

Features:

- 1.European popular style,tempered glass with heater defrosting,safe and bright.
- 2.Automatic rapid defrosting device to ensure the cooling effect.
- 3.Cooled air circulation,cooling speed,temperature is even.
- 4.Front light box can be affixed with ads and logo.
- 5.Curtain design of back door for easier operation.
- 6.Front-opened safety glass for easier operation.



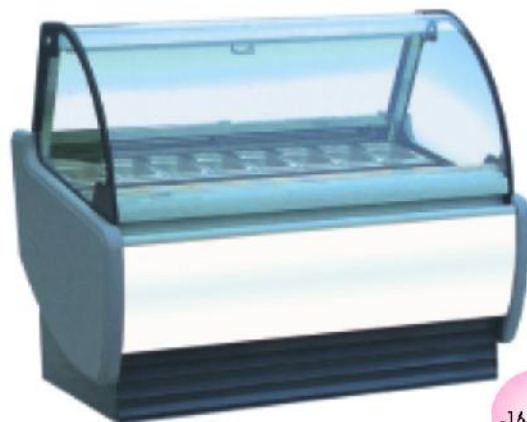
ICE CREAM SHOWCASE 冰淇淋展示柜系列



-16~-20℃

(OPC)冰淇淋展示柜(前开门)
(OPC)Icecream Refrigeration Display Cabinet

型号 Model	柜内温度 Temperature	功率 Power	制冷剂 Refrigerant	净重 Weight	尺寸 Size(mm)
OPC-1060	-16℃~-20℃	750W	R404/R134a	90kg	1060x1020x1350
OPC-1240	-16℃~-20℃	980W	R404/R134a	110kg	1240x1020x1350
OPC-1540	-16℃~-20℃	1250W	R404/R134a	130kg	1540x1020x1350
OPC-1840	-16℃~-20℃	1410W	R404/R134a	210kg	1840x1020x1350



-16~-20℃

(OPC)冰淇淋展示柜(后开门)
(OPC)Icecream Refrigeration Display Cabinet

型号 Model	柜内温度 Temperature	功率 Power	制冷剂 Refrigerant	净重 Weight	尺寸 Size(mm)
OPC-1060	-16℃~-20℃	750W	R404/R134a	90kg	1060x1020x1350
OPC-1240	-16℃~-20℃	980W	R404/R134a	110kg	1240x1020x1350
OPC-1540	-16℃~-20℃	1250W	R404/R134a	130kg	1540x1020x1350



-16~-20℃

(OPO)冰淇淋展示柜
(OPO)Icecream Refrigeration Display Cabinet

型号 Model	柜内温度 Temperature	功率 Power	制冷剂 Refrigerant	净重 Weight	尺寸 Size(mm)
OPO-1200	-16℃~-20℃	980W	R404/R134a	150kg	1200x980x1380
OPO-1500	-16℃~-20℃	1260W	R404/R134a	180kg	1500x980x1380
OPO-1800	-16℃~-20℃	1410W	R404/R134a	210kg	1800x980x1380



-16~-20℃

(OP)冰淇淋展示柜
(OP)Icecream Refrigeration Display Cabinet

型号 Model	柜内温度 Temperature	功率 Power	制冷剂 Refrigerant	净重 Weight	尺寸 Size(mm)
OP-1200	-16℃~-20℃	780W	R404/R134a	170kg	1200x1020x1350
OP-1500	-16℃~-20℃	910W	R404/R134a	210kg	1500x1020x1350
OP-1800	-16℃~-20℃	1500W	R404/R134a	270kg	1800x1020x1350
OP-2000	-16℃~-20℃	1920W	R404/R134a	320kg	2000x1020x1350

豪华展示柜系列 LUXURY SHOWCASE SERIES



SCLG4-418



SCLG4-828

四角型全玻璃旋转冷藏展示柜
Quadrilateral glass showcase(Rotating)

型号 Model	温度 Temperature	制冷剂 Refrigant	外形尺寸 Size (mm)
SCLG4-418	2℃ ~+8℃	R134A	643x643x1850mm

功能简介:

- 1.款式典雅大方;
- 2.可高低调节层架,存放方便灵活;
- 3.风冷,强制冷风循环,制冷速度快,温度均匀;
- 4.中空隔热玻璃,门带安全电压除雾玻璃,降低能耗;
- 5.可拆卸通风百叶窗,便于检修机组;
- 6.底部方向脚轮移动方便;

Features:

1. Elegant style.
2. Adjustable shelves, it is convenient for access.
3. Air-cooling, air cooled circulation, cooling speed, temperature is even.
4. Hollow insulated glass, the door is safety glass with heater to reduce energy consumption
5. Removable ventilation louver for easy maintenance.
6. Castors are convenient for moving.

可选配置:

- 1.铝合金颜色:银色、金色、木纹色;
- 2.层架:固定式层架或旋转式层架;
- 3.玻璃:中空隔热,安全除雾压力平衡玻璃;
- 4.电压:220V/60Hz或110V/60Hz;
- 5.制冷剂:R22或R134a;

Options:

1. Aluminum color: silver, gold, wood color.
2. Shelves: fixed shelves or rotary shelves.
3. Glass: hollow insulation safety glass with heater defrosting and pressure balanced function.
4. Voltage: 220V/60Hz or 110V/60Hz
5. Refrigerants: R22 or R134a

四角型全玻璃旋转冷藏展示柜
Quadrilateral glass showcase(Rotating)

型号 Model	温度 Temperature	制冷剂 Refrigant	外形尺寸 Size (mm)
SCLG4-828	2℃ ~+8℃	R134A	1215x643x1850mm



六角型全玻璃旋转冷藏展示柜
Hexagon glass showcase(Rotating)

型号 Model	温度 Temperature	制冷剂 Refrigant	外形尺寸 Size (mm)
SCLG4-600	2℃ ~+8℃	R134A	926x800x1850mm



梯形全玻璃旋转冷藏展示柜
Trapezia glass showcase(Rotating)

型号 Model	温度 Temperature	制冷剂 Refrigant	外形尺寸 Size (mm)
SCLG4-1180	2℃ ~+8℃	R134A	1920x648x1850mm