

Code:103-1



Golden
World
Trading
Group

www.GoldenWTG.org



· · · Fire sprinkler head series
消防洒水喷头系列



GW-001

ZSTZ-15 直立式喷头
ZSTZ-15 Erect-type nozzle



GW-002

ZSTX-15 下垂式喷头
ZSTX-15 Drooping-type nozzle(drooping jet)



GW-003

ZSTBS-15 边墙式喷头
ZSTBS-15 Sidewall sprinkler



GW-004

ZSTBS-15 边墙式喷头
ZSTBS-15 Sidewall sprinkler



GW-005

ZSTP-15 普通式喷头
ZSTP-15 Common-type nozzle



GW-006

ESFR20 快速反应早期灭火喷头
ESFR20 Quick reflecting early fire-extinguishing nozzle



GW-007

ZSTDY-15 隐蔽式喷头
ZSTDY-15 Concealed Sprinklers



GW-008

ZSTX-15 下垂式喷头
ZSTX-15 Drooping-type nozzle(drooping jet)



GW-009

ZSTX-15 下垂式喷头
ZSTX-15 Drooping-type nozzle(drooping jet)



· · · Fire sprinkler head series
消防洒水喷头系列



GW-010

泡沫喷头
Foam nozzle



GW-011

悬挂灭火器自动喷头
SUSPENDING SELF-EXTINGUISHING NOZZLE HEAD



GW-012

悬挂灭火器自动喷头
SUSPENDING SELF-EXTINGUISHING NOZZLE HEAD



GW-013

ZSTW-15水雾喷头
ZSTW-15 Spray nozzle



GW-014

ZSTM-15 水幕喷头
ZSTM-15 Water curtain nozzle



GW-015

ZSTX-15易熔合金喷头
ZSTX-15 Fusible Link Sprinkler



GW-016

ZSTZ-15直立式喷头
ZSTZ-15Erect-tpe nozzle



GW-017

ZSTZ-15直立式喷头
ZSTZ-15Erect-tpe nozzle



GW-018

双层装饰盘
Double decorative plate



• • • Fire sprinkler head series
消防洒水喷头系列



GW-019

ZSTZ-15 直立式喷头
ZSTZ-15 Erect-type nozzle



GW-020

ZSTX-15 下垂式喷头
ZSTX-15 Drooping-type nozzle(drooping jet)



GW-021

ZSTZ-15 直立式喷头
ZSTZ-15 Erect-type nozzle



GW-022

ZSTX-15 下垂式喷头
ZSTX-15 Drooping-type nozzle(drooping jet)



GW-023

ZSTX-15 下垂式喷头
ZSTX-15 Drooping-type nozzle(drooping jet)



GW-024

ZSTX-15 下垂式喷头
ZSTX-15 Drooping-type nozzle(drooping jet)



GW-025

ZSTZ-15 易熔合金喷头
ZSTZ-15 Fusible Link Sprinkler



GW-026

ZSTX-15 易熔合金喷头
ZSTX-15 Fusible Link Sprinkler



GW-027

ZSTBS-15 边墙式喷头
ZSTBS-15 Sidewall sprinkler



· · · ZST-15 Glass Bulb Sprinkler
ZST-15 型玻璃球洒水喷头

该喷头是湿式自动喷水灭火系统组成的一个关键部件，通常安装于有火灾危险的轻危险级、中危险级、严重危险级的建筑物或构筑物内，如：车间、仓库、宾馆、商场、娱乐场所、医院、影剧院、办公楼及车库等场所。

该喷头主要由喷头架、密封件及玻璃球组成。通过管网安装于防护区内，具有探测火灾及自动喷水灭火的作用。当防护区内发生火灾使环境温度升高时，玻璃球内的液体受热膨胀，达到玻璃动作温度后，就会爆破，于是密封件脱落，喷头开启并按设定的洒水形状喷向保护区进行灭火。

Sprinkler is an important part of wet-type auto spraying system. It is usually installed inside the buildings and structures with light fire danger, medium fire danger and heavy fire danger, such as workshop, warehouse, hotel, shop, recreational place, hospital, cinema, office building and garage.

The sprinkler is composed of sprinkler frame, sealant and glass bulb. It is to be installed in the protective district via ductwork, acting as a fire detector and auto sprayer. In case of fire inside the protective district, the atmosphere temperature rises up and the liquid inside the glass bulb expands after being heated and explodes after reaching the operating of the glass ball. The sealant drops and the sprinkler sprays to the protective district for fire extinguishments subject to the preset shape of spraying.



ZSTZ-15型



ZSTX-15型



ZSTBS-15型



ZSTB-15型



ZSTP-15型

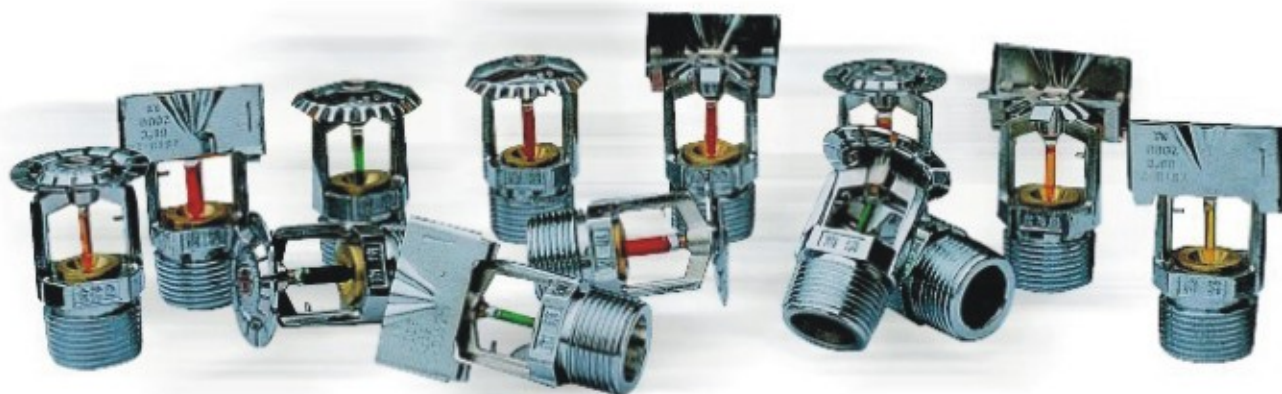
包装说明：5mm直立型ZSTZ15 68、79、93每件为200粒每盒为50粒。
 5mm下垂型ZSTX15 68、79、93每件为200粒每盒为50粒。
 5mm水平边墙型ZSTBS15 68、79、93每件为150粒每盒为50粒。
 3mm直立型ZSTZ15 68、79、93每件为200粒每盒为50粒。
 3mm下垂型ZSTX15 68、79、93每件为200粒每盒为50粒。
 3mm水平边墙型ZSTBS15 68、79、93每件为150粒每盒为50粒。

Packaging: 5mm Vertical ZSTZ15 68,79,93 to 200 per pack to 50.
 5mm sag type ZSTX15 68,79,93 to 200 per pack to 50.
 5mm standard wall type ZSTBS15 68,79,93 to 150 per pack to 50.
 3mm Vertical ZSTZ15 68,79,93 to 200 per pack to 50.
 3mm sag type ZSTX15 68,79,93 to 200 per pack to 50.
 3mm standard wall type ZSTBS 15 68, 79,93 to 150 per pack to 50.



ZST20系列（快速响应）玻璃球洒水喷头，具有外形美观、性能稳定、使用可靠、耐腐蚀性好、使用期长等特点，该系列喷头还具有以下突出优点：1、径口更大，流量更大，控火灭火能力更强；2、特殊设计的溅水盆，布水性能更佳，喷水半径、保护面积更大；3、感温元件采用德国产 $\phi 3\text{mm}$ 玻璃球，响应火灾更迅速，在同样的火场条件下，喷头动作时间更早，能尽早抑制火灾的发展，减少火灾损失。

ZST20 series large-orifice(extended coverage)(quick response) sprinklers have features of pleasing appearance, steady performance, reliable appliance, good corrosion resistance and long service life etc. Furthermore, ZST20 series sprinklers have outstanding advantages; 1、larger orifice, larger flow rate and stronger fire control ability; 2、specially designed deflector, with excellent distribution performance, larger discharge radius and protective coverage; 3、the quick response sprinkler can response the fire even more quickly since its heat element adopts $\phi 3\text{mm}$ glass bulb from Germany. Under the same fire conditions, these series sprinklers can suppress the expansion of the fire much earlier due to its early response time.



技术参数 technical parameters

喷头型号 Type	公称动作温度 Rated operating temperature	最高环境温度 Max. ambient temperature	工作液色标 Colour	公称通径 Nominal diameter	流量系数K Flow coefficient	接口螺纹 Connecting thread	玻璃球直径 Diameter of glass bulb
直立型 Upright T-ZSTZ20-68°C	68°C	38°C	红 red	Ø 20mm	155±9	R3/4	Ø 5mm
下垂型 Pendant T-ZSTX20-68°C	68°C	38°C	红 red				
水平边墙型 Sidewall T-ZSTBS20-68°C	68°C	38°C	红 red				

所属类别：UL认证洒水喷头
商品名称：UI认证洒水喷头
 (玻璃球洒水喷头UL认证产品)



UL玻璃球洒水喷头

执行标准：**UL199**，连接螺纹：**R1/2" 或NPT1/2"**。玻璃球直径 (mm) 及响应指数(m.s)0.5：**Φ3mm RTI≤50；Φ5mm RTI=80-350**。流量特性系数：**K=5.6 (公制80)**。最大工作压力：**175psi(1.2MPa)**，出厂水压测试：**100%500psi(3.45MPa)**。

标准外观颜色：分本色钝化处理、本色喷丸处理、抛光镀铬 (镀金) 处理或抛光镀塑处理等，可供用户选择。温感元件 (玻璃球) 和密封垫圈为德国进口，由德国进口流水线装配、检测。

洒水喷头是自动喷水灭火系统中关键的组成部件。用来探测火灾并通过自动喷水来控制或扑灭火灾。广泛用于：宾馆、商厦、仓储库房、车库、办公楼、医院、影剧院、服装厂、生产车间等轻、中危险等级场所，也可保护严重危险级的建筑物。

主要参数：

喷头型号		公称动作温度	玻璃球充液颜色
下垂型	SSP QR15-68	155 F/68℃	红
	SSP QR 15-79	175 F/79℃	黄
	SSP QR 15-93	200 F/93℃	绿
直立型	SSU QR 15-68	155 F/68℃	红
	SSU QR 15-79	175 F/79℃	黄
	SSU QR 15-93	200 F/93℃	绿
水平边墙型	HSW QR 15-68	155 F/68℃	红
	HSW QR 15-79	175 F/79℃	黄
	HSW QR 15-93	200 F/93℃	绿
下垂型	SSP S15-68	155 F/68℃	红
	SSP S 15-79	175 F/79℃	黄
	SSP S 15-93	200 F/93℃	绿
直立型	SSU S 15-68	155 F/68℃	红
	SSU S 15-79	175 F/79℃	黄
	SSU S 15-93	200 F/93℃	绿
水平边墙型	HSW S 15-68	155 F/68℃	红
	HSW S 15-79	175 F/79℃	黄
	HSW S 15-93	200 F/93℃	绿



· · · ZSTD-15 Concealed Glass Bulb Sprinkler
ZSTD-15 隐蔽型玻璃球洒水喷头

由于该喷头可隐藏安装于天花板内，盖板颜色与天花板颜色相匹配，在提供防护保障之时，让人不易感觉到喷头的存在，因而广泛安装于装饰豪华、讲究美观的场所以及因装潢而导致天花板太低或人流密集、货物搬运频繁，容易碰撞到外露喷头的场所。如：高级宾馆、商场、娱乐场所、办公楼等。

Aa the sprinkler can be hidden the ceiling,with matched cover color with the color of ceiling,which is not easy to be found while providing protection,it is widely adopted by place with luxurious decoration and beautiful cmament, or place with low ceiling due to the decoration,or place with population or frequency cargo transportation, or place where exposed sprinkler is easilyTouched. For example,high class hotel ,shop,recreation place and office building.

该喷头主要由玻璃球洒水喷头、支承环、外壳及盖板等组成，且外壳与盖板间采用低熔点易熔合金焊接紧固。通过管网安装于防护区内，具有控制火灾及自动喷水灭火的作用。当防护区发生火灾使环境温度升高，达到易熔合金的熔点时，盖板首先从外壳上脱落，使喷头暴露，当温度继续升高达到玻璃球运作温度时，玻璃球就会爆破，于是密封件脱落，喷头开启并按设定的洒水形状喷向保护区进行灭火。

The sprinkler is composed of glass ball sprinkler, support ring,casing and cover.The casing and the cover are welded with fusible alloy of low melting point.It is installde inside the protective district via ductwork.,acting as a fire detector and auto sprinkler.In case of fire inside the protective district,when the atmosphere temperature rises up and reaches the melting point of the fusible alloy,the cover will drop from the casing and expose the sprinkler,When the temperature keeps rising and reaches the opersting temperature of the glass ball,the glass ball will explode,the sealant will drop ang the sprinkler will spray to the protective district for fire extinguishments subject to the preset shape of spraying.



ZSTDY-15



ZSTDY-15

· · · ZST-20 Large Dlameter Glass Bulb Sprinkler
ZST-20 型大口径玻璃球洒水喷头

该喷头是在改进喷头口径及溅水盘并调整工作压力后研制的一种新型喷头，具有保护面积大，射程远等优点。适用于学校、饭店、宾馆、商场、娱乐场所、医院、影剧院、办公楼等类似场所。扩展覆盖边墙型喷头特别适用于宾馆客房等不便在天花板下安装其他类型喷头的场所。

This sprinkler is a newly developed product after the improvement of diameter and splashing disc and the regulation of working pressure,with the advantages of largecoverage and long spraying range.It is applicable to school,restauant,hotel,shop,recreation plce,hospital,cinema, office building and other similar places.Extended well-mounted sprinkler is suitable for hotel guest room and place where sprinkler cannot be installde under he ceiling.



ZSTZ-20



ZSTX-20



ZSTBS-20



南安市广威消防器材厂JOP系列玻璃球洒水喷头已通过美国保险商实验室公司 (UL) 的认证。

执行标准: UL199第17版本、加拿大自动洒水喷头标准 ULC/ORDC199-03
符合美国消防协会标准NFPA 13喷头系统安装使用。

主要参数:

流量系数: 5.6K (美制), 公制80

额定工作压力: 175psig (美制), 公制1.2Mpa

水压密封压力: 3.45Mpa

型号规格:

产品型号SIN码型号含义对应中文型号玻璃球温级℃

SSU SR15 JD001 5mm直立型ZSTZ15 68、79、93

SSU QR15 JD002 5mm直立型K-ZSTZ15 68、79、93

SSP SR15 JD003 5mm下垂型ZSTX15 68、79、93

SSP QR15 JD004 3mm下垂型K-ZSTX15 68、79、93

HSW SR15 JD005 5mm水平边墙型ZSTBS15 68、79、93

HSW QR15 JD006 3mm水平边墙型K-ZSTBS15 68、79、93

注: QR为快速响应 档案号: EX6973 控制号: 30ZY

Nan Guang Wei Fire Equipment Factory JOP series glass ball sprinkler head has passed the Underwriters Laboratories (UL) certification.

Implementation of the standards:

UL199 17 version, the Canadian Standards ULC/ORDC199-03 automatic sprinkler head

Meet the National Fire Protection Association standard NFPA 13 sprinkler systems installed

The main parameters:

Flow coefficient: 5.6K (American), metric 80

Rated working pressure: 175psig (American), metric 1.2Mpa

Pressure sealing pressure: 3.45Mpa

Model Specifications:

Model SIN Code corresponding to the meaning of the Chinese model type glass ball temperature level °C.

SSU SR15 JD001 5mm Vertical ZSTZ15 68,79,93

SSU QR15 JD002 5mm Vertical K-ZSTZ15 68,79,93

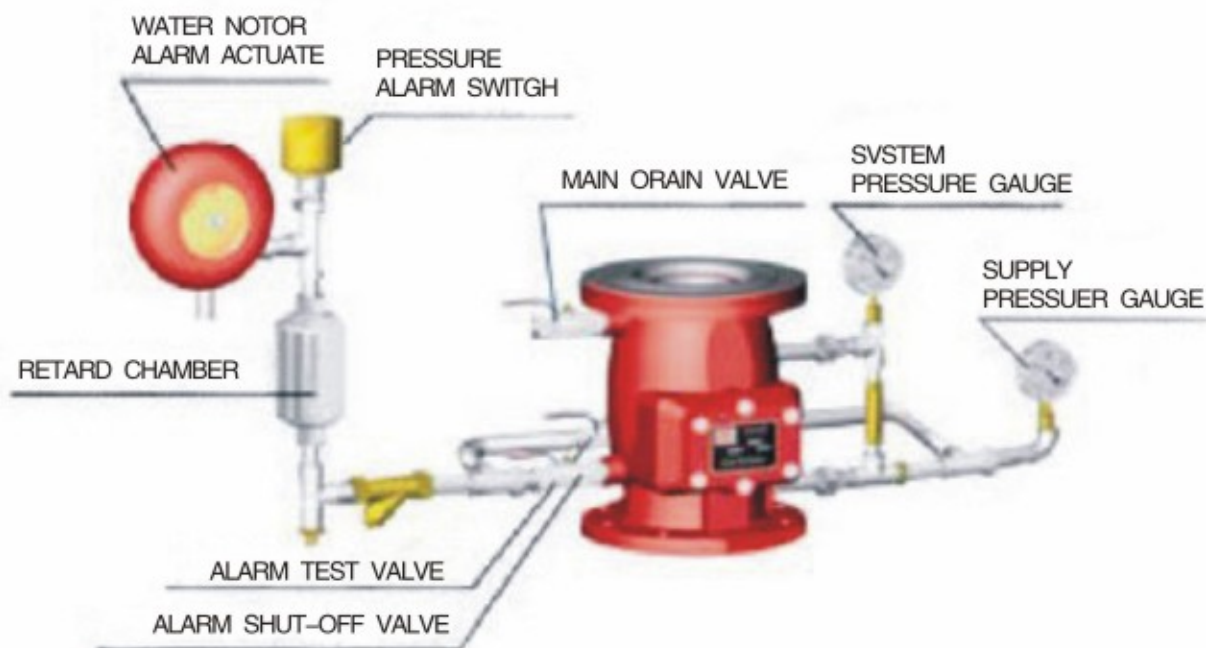
SSP SR15 JD003 5mm sag type ZSTX15 68,79,93

SSP QR15 JD004 3mm droop-type K-ZSTX15 68,79,93

HSW SR15 JD005 5mm standard wall type ZSTBS15 68,79,93

HSW QR15 JD006 3mm horizontal wall type K-ZSTBS15 68,79, 93

Note: QR for fast response File Number: Ex6973 Control No.: 30ZY



Model Nx009 Alarm Check Valve, Vertical Trim

Technical Data

Size	4" (DN100)		6" (DN150)	
	Inlet Connection Style	Flange	Groove	Flange
Outlet Connection Style	Flange	Groove	Flange	Groove
Shipping Weight(lbs/kg)	55/25	51/23	75/34	66/30
Max.Working Pressure	175psig/1.2MPa(12 bar)			
Factory Hydro Test	100% @350 psig/ 2.4MPa (124 bar)			
Standard Finish	Red Painted			
Flang & Groove Specification	Flange.Class 150 ANSIB 16.1&Groove; C606 ANSI/AWWA			
Required Accessories	Standard Trim			
Optional Accessories	Retard Chamber, Water Motor Alarm, Alarm Pressure Switch			
Installation Manner	Vertically			
Listings and Approvals	UL(United States)			



湿式报警阀 Wet Valve

湿式自动喷水灭火系统的关键部件，它动作灵敏，并在规定的流量下开启，报警。

The wet valve is a key component of the wet water sprinkler system. It can operate flexibly, and open and give out alarms at a rated flow rate.

湿式阀主要技术参数 Technical parameters

型号 Type	公称通径(mm) Nominal diameter(mm)	额定工作压力(MPa) Rated operating pressure(MPa)	结构特点 Remarks
ZSFZ100	100	1.2	外补偿器 可直立或水平安装 External compensator, vertically or horizontally installed
ZSFZ150	150	1.2	
ZSFZ200	200	1.2	

干式阀主要技术参数 Technical parameters

型号 Type	公称通径(mm) Nominal diameter(mm)	额定工作压力(MPa) Rated operating pressure(MPa)
ZSFC100	100	1.2