

Code: 151-5



Golden  
World  
Trading  
Group

[www.GoldenWTG.org](http://www.GoldenWTG.org)

# PREPARATION LINE

## LAP 1

<b>Rieter</b>	<b>E 2/4</b>
• <b>Year of construction</b>	<b>1989</b>
• <b>Register</b>	<b>1042 830 C84A</b>
• <b>Register</b>	<b>1042 830 C85A</b>
<b>Technical data</b>	
• <b>Power</b>	<b>4 kw</b>
• <b>Weight</b>	<b>2170 kg</b>
• <b>Length/Width/Height</b>	<b>5510/4860/2640 mm</b>
• <b>Productivity</b>	<b>60 m/min</b>
• <b>System</b>	<b>Autolap</b>



**Ruen Elite**

# PREPARATION LINE

## LAP 2

<b>Rieter</b>	<b>E 4/1</b>
• <b>Year of construction</b>	<b>1989</b>
• <b>Register</b>	<b>1044 541 D78A</b>
• <b>Register</b>	<b>1044 541 D79A</b>

### Technical data

• <b>Power</b>	<b>4 kw</b>
• <b>Weight</b>	<b>2900 kg</b>
• <b>Length/Width/Height</b>	<b>5395/2907/2050 mm</b>
• <b>Productivity</b>	<b>60 m/min</b>
• <b>System</b>	<b>Autolap</b>

**Modernization of Register 1044 541 D79A:**

➤ **Inverter installed 4kw**



**Ruen Elite**

# PREPARATION LINE

## Combing 6 pcs 1989

<b>Rieter</b>	<b>E 7/5</b>
• <b>Year of construction</b>	<b>1989</b>
• <b>Register</b>	<b>1047 108 W09...W1</b>

### Technical data

- |                              |                          |
|------------------------------|--------------------------|
| • <b>Power</b>               | <b>9 kw</b>              |
| • <b>Weight</b>              | <b>4725 kg</b>           |
| • <b>Length/Width/Height</b> | <b>7050/2035/1700 mm</b> |
| • <b>Productivity</b>        | <b>30 kg/hour</b>        |
| • <b>Tromel separator</b>    |                          |
- **Modernization of Register 1047 108 W09, 1047 108 W13 and 1047 108 W14: of Register**
  - **Motor gear of main transmission is changed with Motor Siemens 4kw with inverter 5.5kw with brake Mitsubishi.**



**Ruen Elite**

# PREPARATION LINE

## Combing 2 pcs 1985

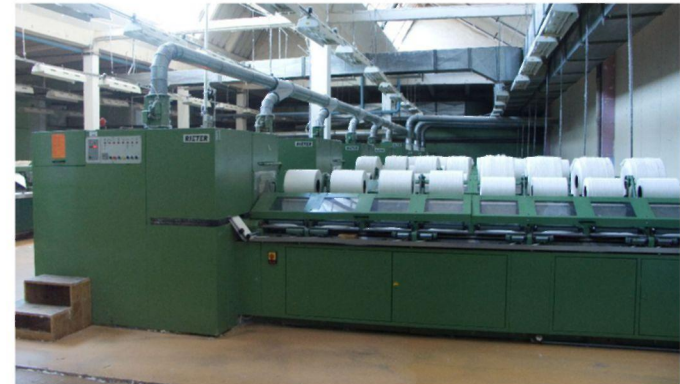
- Rieter** **E 7/5**
- **Year of construction** **1985**
  - **Register** **1047 500 D01, 1047 500 D03**

### Technical data

- **Power** **9 kw**
- **Weight** **4600 kg**
- **Length/Width/Height** **7050/2035/1700 mm**
- **Productivity** **30 kg/hour**
- **Central drawing**

**Modernization of Register 1047 500 D01 , 1047 500 D03:**

➤ **Motor gear of main transmission is changed with Motor Siemens 4kw with inverter 5.5kw with brake Mitsubishi.**



**Ruen Elite**

# PREPARATION LINE

## Combing 1 piece

Rieter **E 7/5**  
• Year of construction **1983**  
• Register **1047 374 A72**

### Technical data

• Power **9 kw**  
• Weight **4600 kg**  
• Length/Width/Height **7050/2035/1700 mm**  
• Productivity **30 kg/hour**  
• Central drawing

Modernization of Register 1047 374 A72 :

➤ Motor gear of main transmission is changed with Motor Siemens 4kw with inverter 5.5kw with brake Mitsubishi.



**Ruen Elite**

# PREPARATION LINE

## Drawing frame 2 pieces

**Rieter** **RSB51**  
• **Year of construction** **1989**  
• **Register** **S45530/1, S45530/2**

### Technical data

• **Power** **7.11 kW**  
• **Weight** **1400 kg**  
• **Length/Width/Height** **7327/1695/1760 mm**  
• **Productivity** **500 m/min**  
• **Tex detector** **Yes**  
➤ **Doffing System** **Automatic**  
➤ **Feeding cans diameter** **6pieces 600x1200**  
➤ **Draft system** **3/3**  
• **Size of can at delivery** **500x1200**



**Ruen Elite**

# PREPARATION LINE

## Roving frame 3 pcs 1989

<b>Rieter</b>	<b>F 1/1 A</b>
• <b>Year of construction</b>	<b>1989</b>
• <b>Register</b>	<b>1051 689 F31...F33</b>
<b>Technical data</b>	
• <b>Power</b>	<b>13.6 kW</b>
• <b>Weight</b>	<b>13100 kg</b>
• <b>Length/Width/Height</b>	<b>16307/1224/2153 mm</b>
• <b>Spindles</b>	<b>120</b>
• <b>Size of bobines</b>	<b>12''x7''</b>
➤ <b>Draft system</b>	<b>3/3</b>
• <b>Blowing device</b>	<b>Yes LUWA</b>



**Ruen Elite**



# PREPARATION LINE

## Roving frame 1 pcs 1979 1 pcs 1978

- Rieter** F 1/1 A
- **Year of construction** 1978, 1979
  - **Register** 1051 141 S32, 1051 212 T81

### Technical data

- **Power** 13.6 kW
- **Weight** 12100 kg
- **Length/Width/Height** 14845/1224/2153 mm
- **Spindles** 108
- **Size of bobines** 14''x7''
- **Draft system** 3/3
- **Blowing device** NO



Ruen Elite